

Price includes standard floorplan with Q9 facade.



FIXED PRICE HOUSE & LAND

Jumeirah 6-49

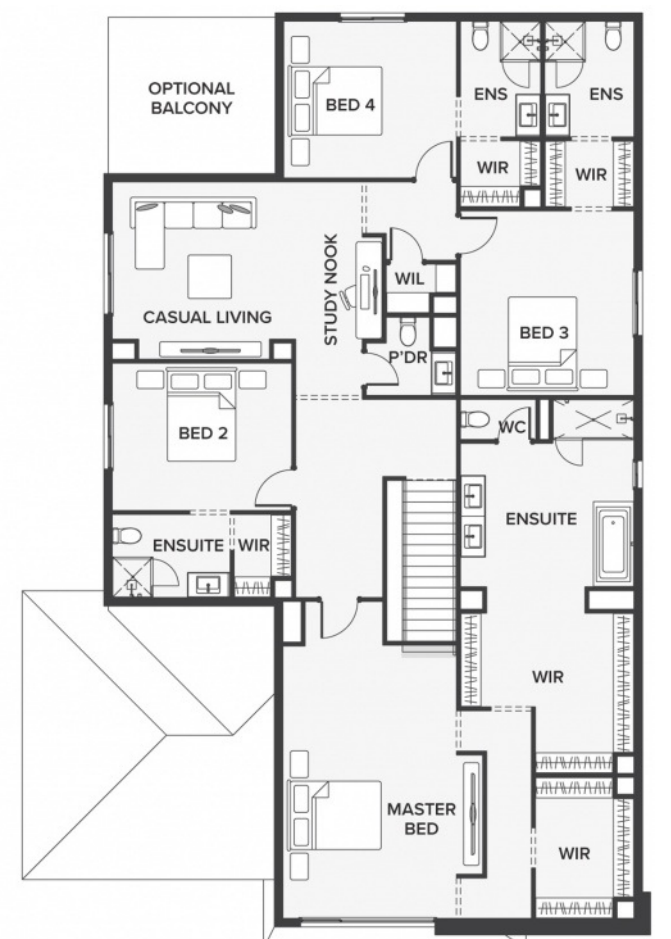
Lot 3049, Maryanne Way
LAND SIZE: 471.00m²



459.94m² | 49.51 sqs

- ▲ Architecturally inspired fully rendered facade
- ▲ Brickwork or rendered foam above all ground floor windows and sliding doors
- ▲ Smeg Appliances to Kitchen
- ▲ Floor coverings throughout
- ▲ Silestone benchtops to Kitchen and Ensuite(s) Bathroom
- ▲ Base Cabinetry to Laundry
- ▲ and much more ...

edge
inclusions



Please Contact
Sujen Bhashkar
0412 357 732
sujenb@urbanedgehomes.com.au

Luxury Redefined
urbanedgehomes.com.au