

Price includes standard floorplan with Q2-D facade.



Artist impression. Furniture, landscaping, driveway, window furnishing and porch decking is not provided by Urbanedge Homes.

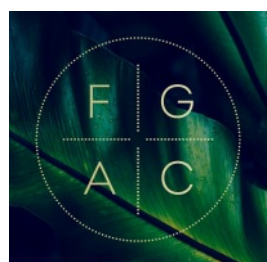
FIRST HOME BUYERS PRICE \$616,154 ^

FIXED PRICE HOUSE & LAND

Maya 2-17

Lot 7, Raam Circuit

LAND SIZE: 275.00m²

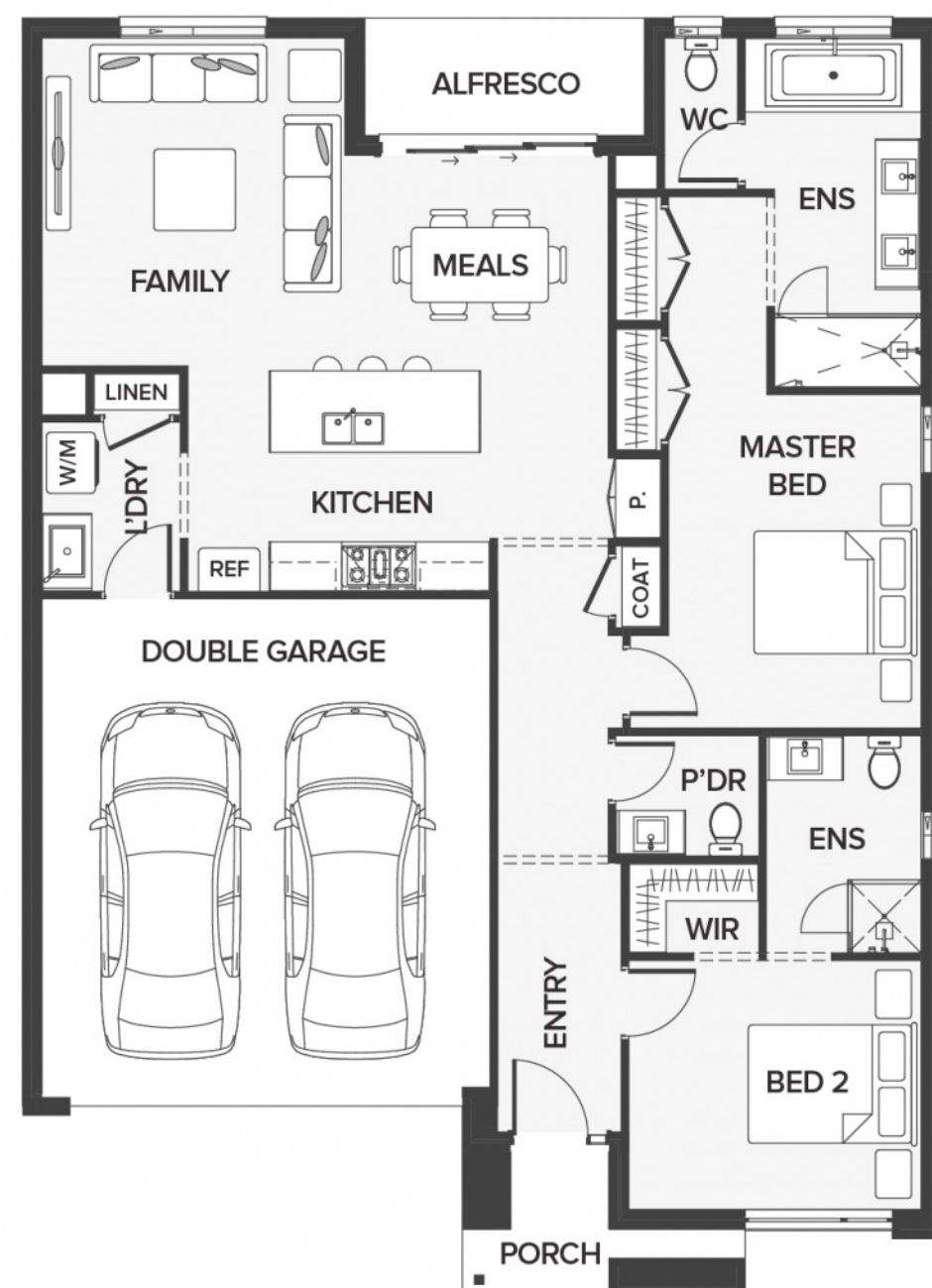


2 2 2

175.11m² | 18.85 sqs

- ▲ Architecturally inspired fully rendered facade
- ▲ Brickwork or rendered foam above all ground floor windows and sliding doors
- ▲ Smeg Appliances to Kitchen
- ▲ Floor coverings throughout
- ▲ Silestone benchtops to Kitchen and Ensuite(s) Bathroom
- ▲ Base Cabinetry to Laundry
- ▲ and much more ...

edge
inclusions



Please Contact
Brett Swan
0432 615 388
bretts@urbanedgehomes.com.au

Luxury Redefined
urbanedgehomes.com.au

