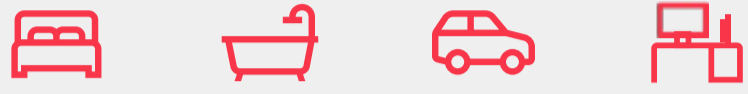


# Jumeirah 4-47

**47.01** m+  
lot width

width **14 m+** | depth **30 m+**



**4**      **2**      **2**      **3.66 x 3.11**

**Exterior Width:**                      **12030 mm**

**Exterior Length:**                     **22530 mm**

## Dimensions

Living	382.05 m <sup>2</sup>	41.13 sqs
Garage	37.09 m <sup>2</sup>	3.99 sqs
Portch	4.66 m <sup>2</sup>	0.51 sqs
Alfresco	12.90 m <sup>2</sup>	1.39 sqs
Balcony	0.00 m <sup>2</sup>	0.00 sqs
Optional Alfresco	0.00 m <sup>2</sup>	0.00 sqs

**Total 436.72m<sup>2</sup> | 47.01 sqs**

Floorplan images and measurements are to be used as a guide only. Please refer to specific working drawings for details.

For more information please visit:

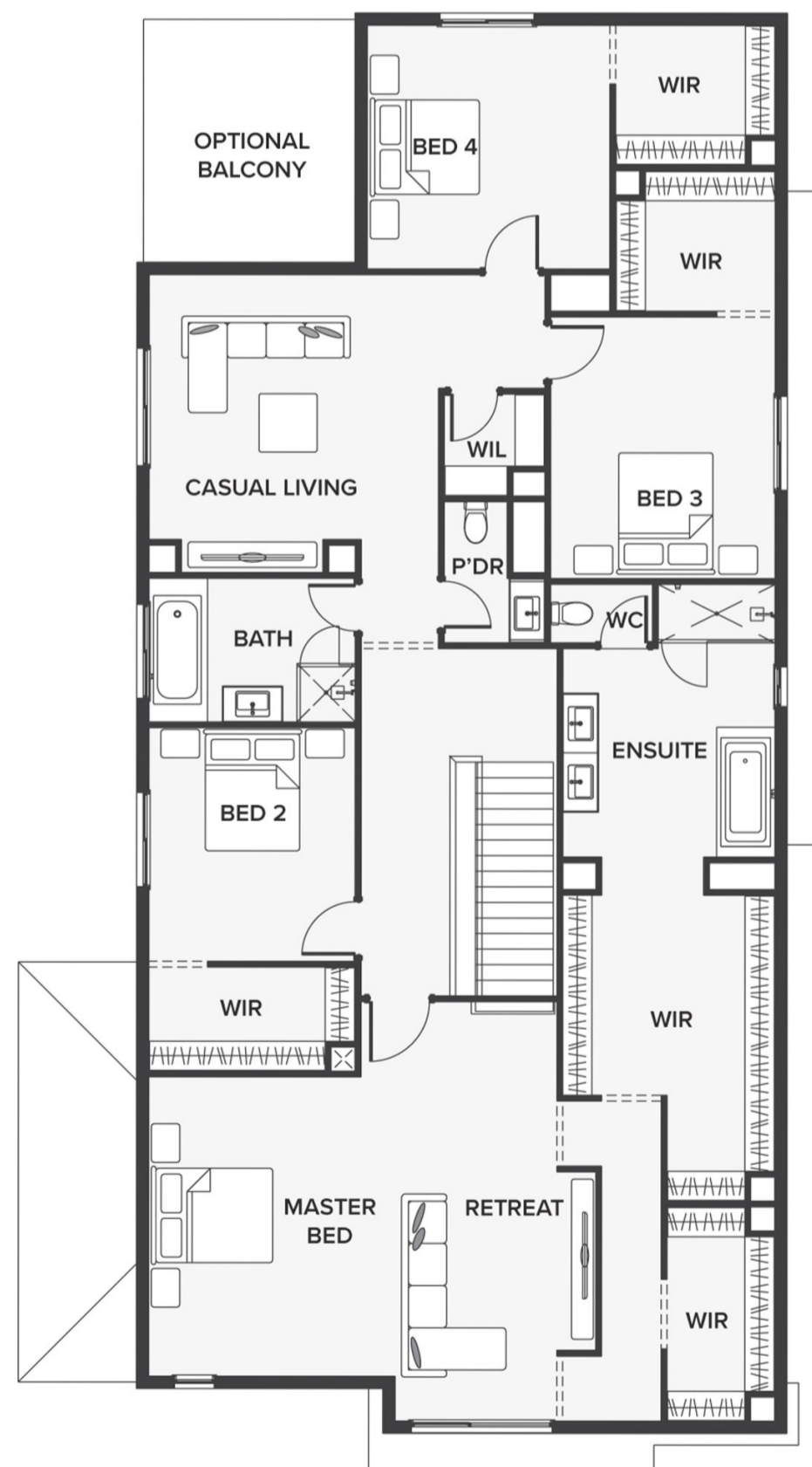
[www.houseandlandworld.com](http://www.houseandlandworld.com)

or call:

**1300 HL WORLD**



Ground Floor



First Floor