

Price includes standard floorplan with S1 facade.



Furniture, feature lighting, landscaping, driveway, window furnishings, and porch decking not provided by Eight Homes.

FIRST HOME BUYERS PRICE \$668,634

## FIXED PRICE HOUSE & LAND

## MODE4-31

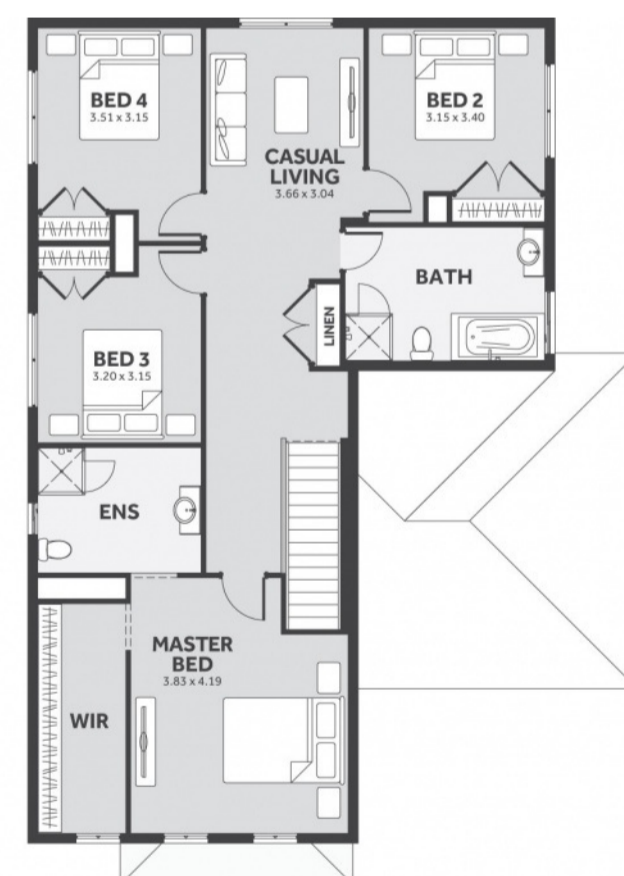
Lot 2210, Edifice Drive  
LAND SIZE: 377.00m<sup>2</sup>

CREEK  
STONE  
TARNEIT

4 2.5 2

287.24m<sup>2</sup> | 30.92 sqs

- ✓ Council and Developer Requirements
- ✓ 12 Month Price Freeze
- ✓ 25 Year Structural Guarantee
- ✓ \$888 Deposit
- ✓ Efficient and Simple
- ✓ Stone bench tops & 900mm appliances to Kitchen
- ✓ Stylish 8mm timber look laminate flooring
- ✓ Driveway



Please Contact  
Ana Milenovich  
0417 229 601  
anam@8homes.com.au

*We make it easy!*