

Price includes standard floorplan with S1 facade.



FIRST HOME BUYERS PRICE \$558,827

## FIXED PRICE HOUSE & LAND

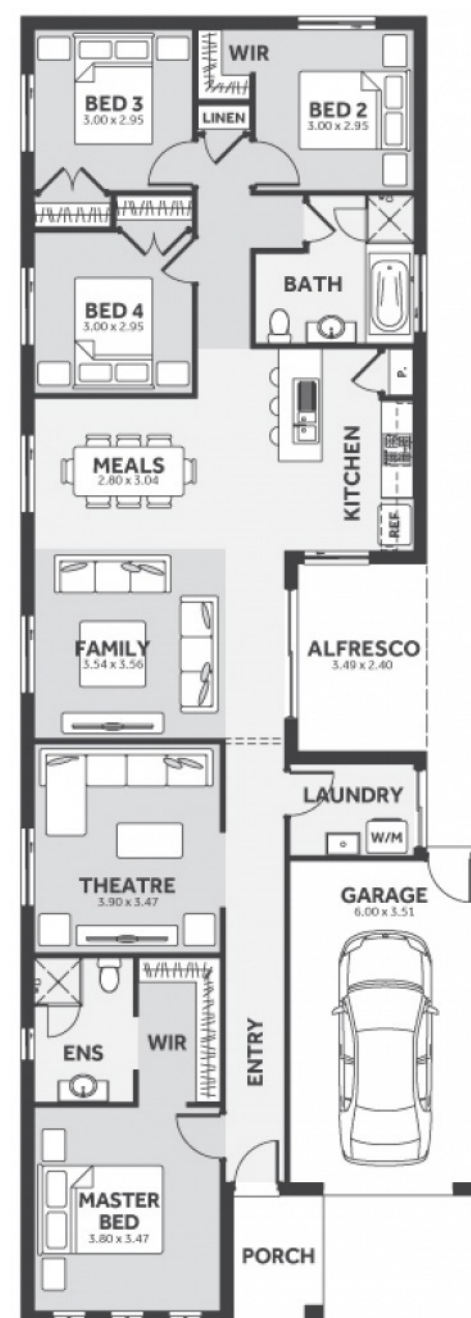
### S ONE.2

Lot 452, Dapple Street Tarneit  
LAND SIZE: 336.00m<sup>2</sup>



186.91m<sup>2</sup> | 20.12 sqs

- ✓ Council and Developer Requirements
- ✓ 12 Month Price Freeze
- ✓ 25 Year Structural Guarantee
- ✓ \$888 Deposit
- ✓ Efficient and Simple
- ✓ Stone bench tops & 900mm appliances to Kitchen
- ✓ Stylish 8mm timber look laminate flooring
- ✓ Driveway



Please Contact  
Greg Jordan  
0406 003 698  
gregj@8homes.com.au

*We make it easy!*