

Price includes standard floorplan with S1 facade.



Furniture, feature lighting, landscaping, driveway, window furnishings, and porch decking not provided by Eight Homes.

FIRST HOME BUYERS PRICE \$915,000

## FIXED PRICE HOUSE & LAND

### S ONE.1

Lot 3132, Somme Crescent Berwick  
LAND SIZE: 415.00m<sup>2</sup>

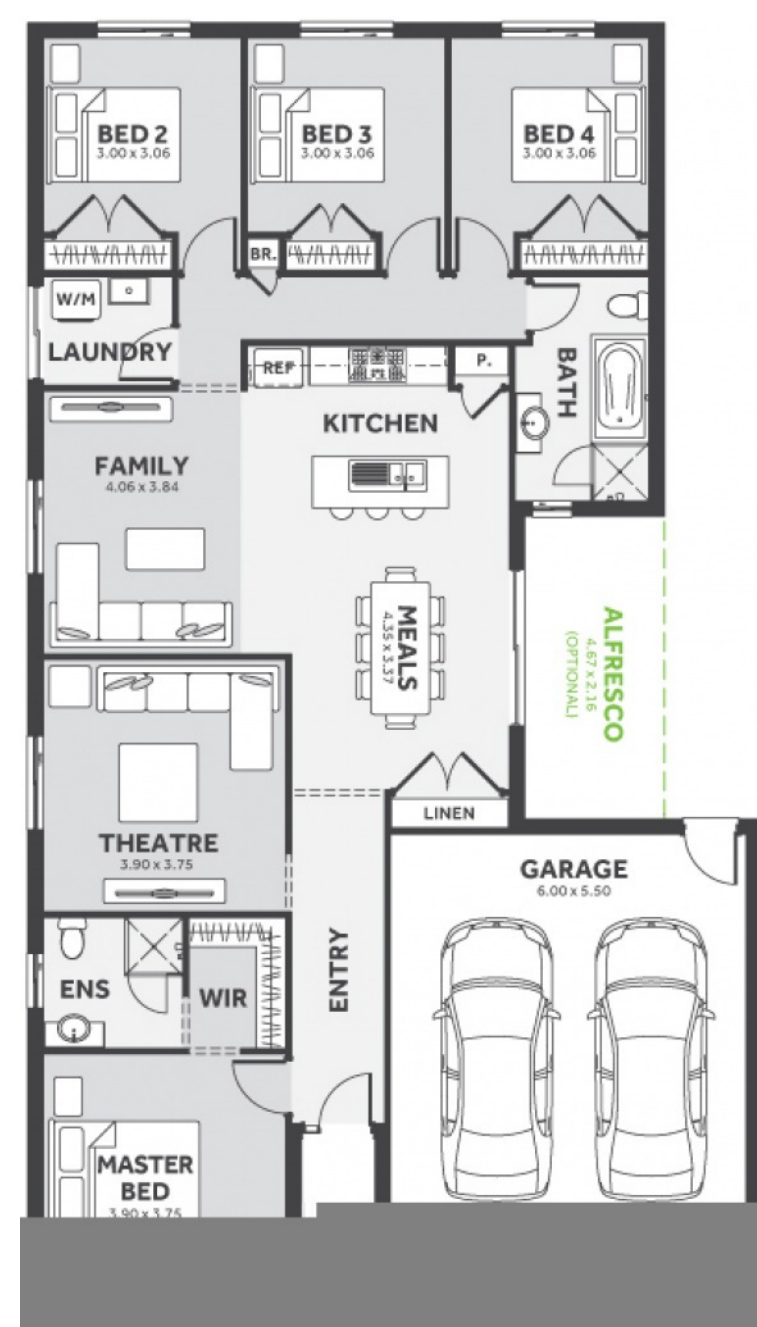
## ALIRA

AT BERWICK

4 2.0 2

192.39m<sup>2</sup> | 20.71 sqs

- ✓ Council and Developer Requirements
- ✓ 12 Month Price Freeze
- ✓ 25 Year Structural Guarantee
- ✓ \$888 Deposit
- ✓ Efficient and Simple
- ✓ Stone bench tops & 900mm appliances to Kitchen
- ✓ Stylish 8mm timber look laminate flooring
- ✓ Driveway



Please Contact  
Tania Shaw  
0430 927 258  
tanas@8homes.com.au

*We make it easy!*