

Price includes standard floorplan with LD - 100DBG facade.



FIRST HOME BUYERS PRICE \$687,347 ^

FIXED PRICE
HOUSE & LAND

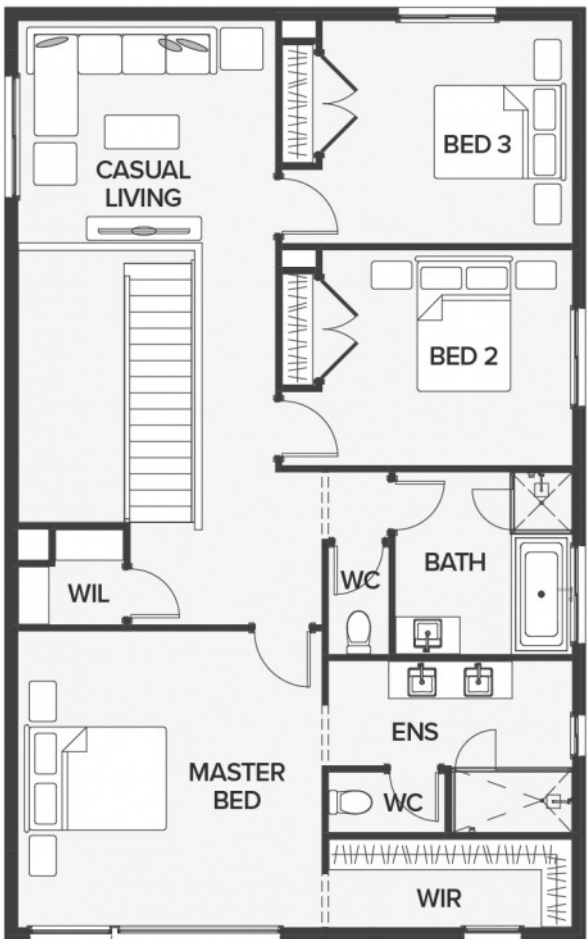
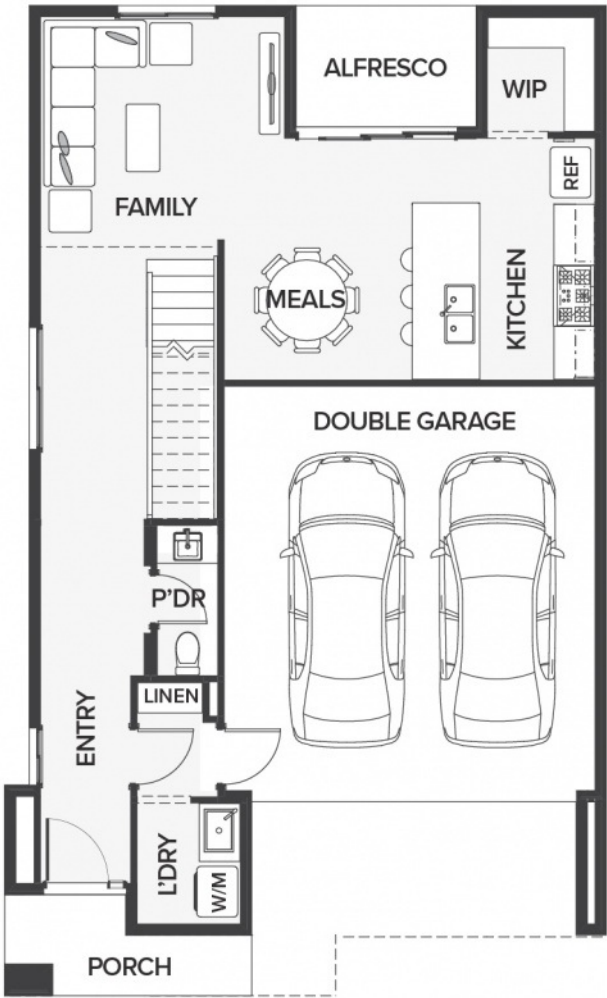
Subi 2-25
Lot 6530, Nokota Circuit
LAND SIZE: 286.00m²



230.48m² | 24.81 sqs

- Architecturally inspired fully rendered facade
- Brickwork or rendered foam above all ground floor windows and sliding doors
- Smeg Appliances to Kitchen
- Floor coverings throughout
- Silestone benchtops to Kitchen and Ensuite(s) Bathroom
- Base Cabinetry to Laundry
- and much more ...

edge
inclusions



Please Contact
Sujen Bhashkar
0412 357 732
sujenb@urbanedgehomes.com.au

LuxuryRedefined
urbanedgehomes.com.au

*Price is based on the standard floorplan and façade shown above. Urbanedge Homes reserves the right to change prices/promotions without notification. Subject to developer's design review panel final approval. Package price is based on builder's preferred siting. Images are for illustrative purposes and are to be used as a guide only. Urbanedge Homes does not provide furniture, décor, landscaping or decking. Please refer to house specific inclusions and working drawings for all details. ^Available to first home buyers eligible for the state government First Home Owners Grant. For details visit www.sro.vic.gov.au. Mahercorp Pty. Ltd. DBU 1994.