

Price includes standard floorplan with S1 facade.



Furniture, feature lighting, landscaping, driveway, window furnishings, and porch decking not provided by Eight Homes.

FIRST HOME BUYERS PRICE \$551,888 ^

FIXED PRICE HOUSE & LAND

VIVA 2-17

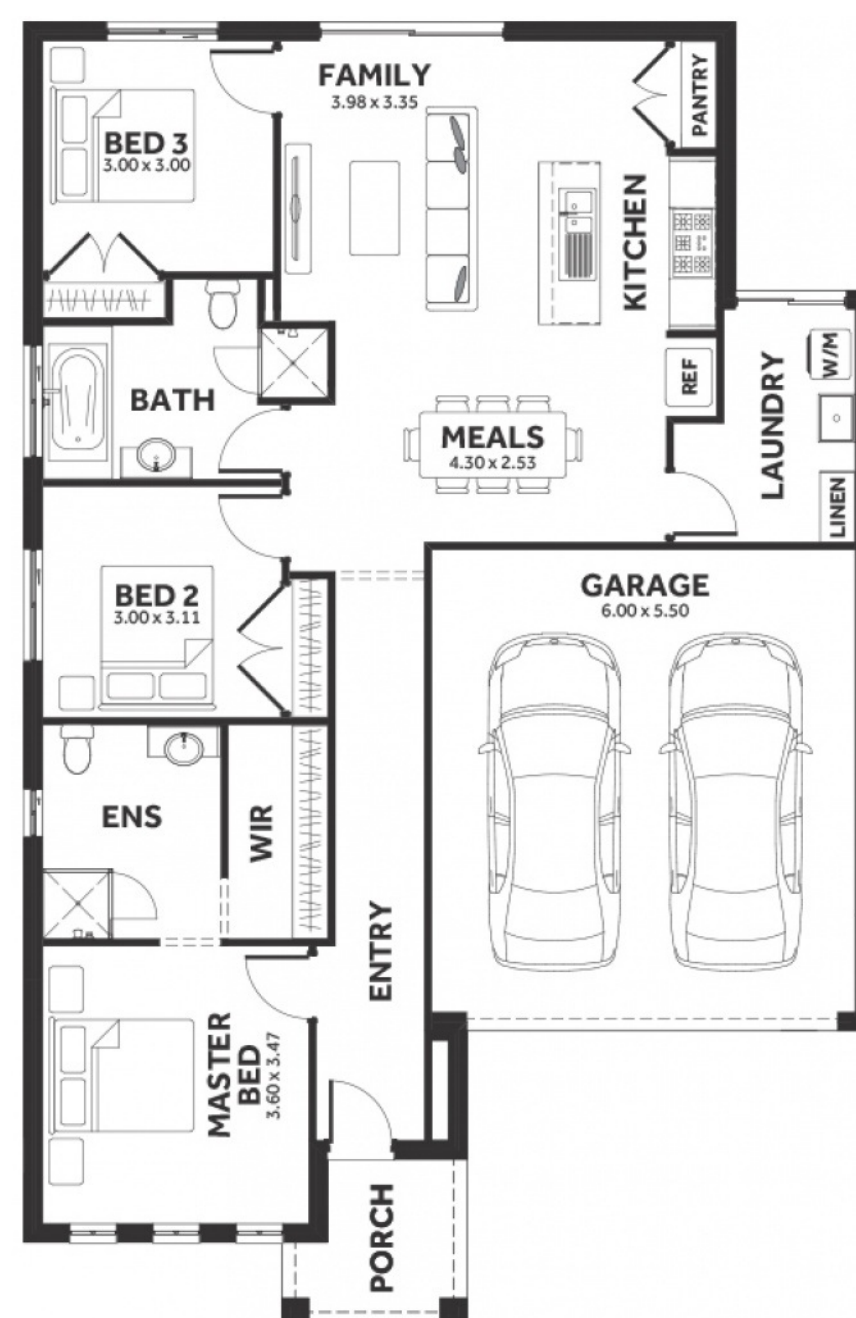
Lot 5022, Wolvering Crescent
LAND SIZE: 262.00m²

WESTBROOK
ANOTHER DENNIS FAMILY COMMUNITY

3 2.0 2

152.72m² | 16.44 sqs

- ✓ Council and Developer Requirements
- ✓ 25 Year Structural Guarantee
- ✓ \$888 Deposit
- ✓ Stone bench tops & overhead cupboards to the kitchen
- ✓ 900mm appliances & dishwasher to the kitchen
- ✓ Tiled Shower Bases
- ✓ Choice of tiles or timber look laminate flooring
- ✓ Driveway & Garage door remotes
- ✓ Double glazed windows



Please Contact
Billy Spaseski
0451 985 551
Billys@8homes.com.au

We make it easy!