

Price includes standard floorplan with S1 facade.



Furniture, feature lighting, landscaping, driveway, window furnishings, and porch decking not provided by Eight Homes.

FIRST HOME BUYERS PRICE \$660,172 ^

## FIXED PRICE HOUSE & LAND

## S.SIX.2

Lot 34533, Mudrooroo Circuit

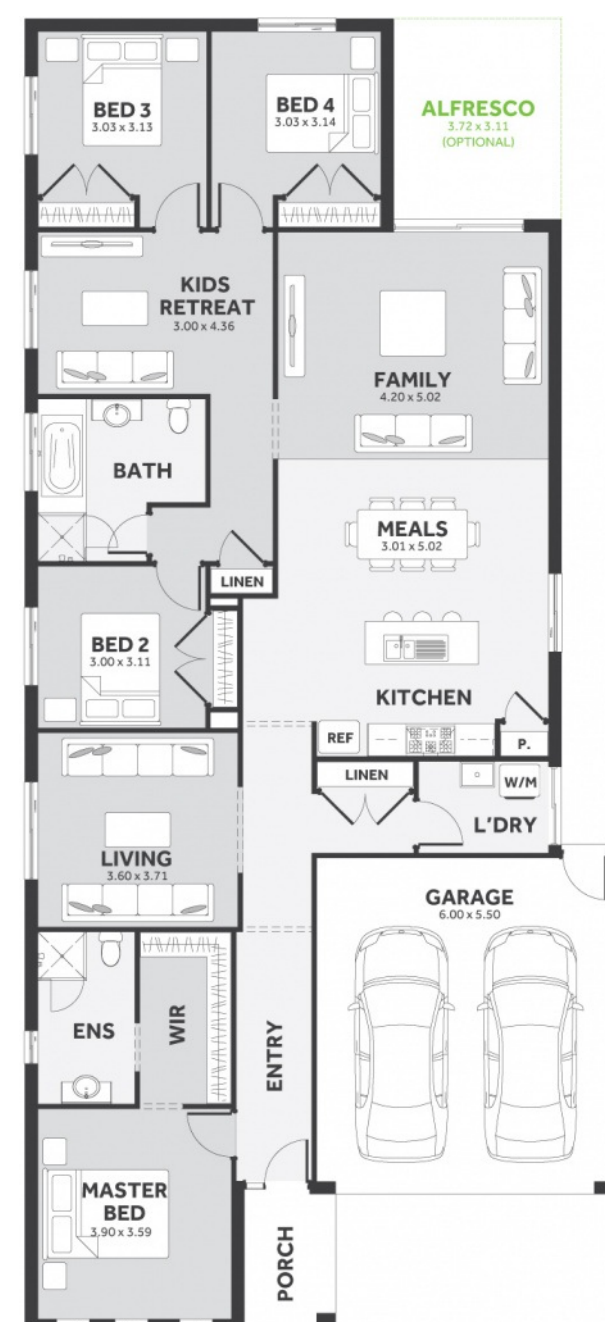
LAND SIZE: 400.00m<sup>2</sup>

## Cloverton

4 2.0 2

239.31m<sup>2</sup> | 25.76 sqs

- ✓ Council and Developer Requirements
- ✓ 25 Year Structural Guarantee
- ✓ \$888 Deposit
- ✓ Stone bench tops & overhead cupboards to the kitchen
- ✓ 900mm appliances & dishwasher to the kitchen
- ✓ Tiled Shower Bases
- ✓ Choice of tiles or timber look laminate flooring
- ✓ Driveway & Garage door remotes



Please Contact

Harry Singh

0493 222 303

harrys@8homes.com.au

*We make it easy!*