

Price includes standard floorplan with STANDARD 12.5-16M BUILD OVER. JPEG facade.



Artist impression. Furniture, landscaping, driveway, window furnishing and porch decking is not provided by Urbanedge Homes.

FIRST HOME BUYERS PRICE \$982,186 ^

FIXED PRICE HOUSE & LAND

Maisa 2-39

Lot 24, Irina Road

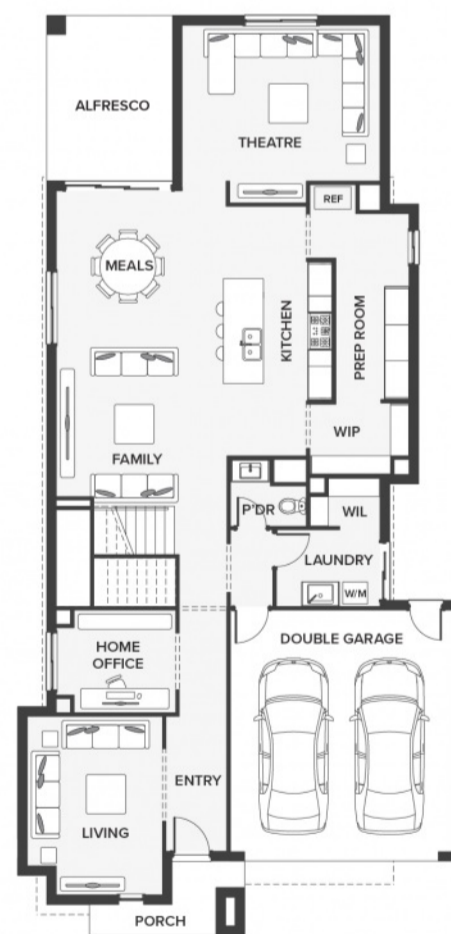
LAND SIZE: 356.00m²



363.05m² | 39.08 sqs

- ▲ Architecturally inspired fully rendered facade
- ▲ Brickwork or rendered foam above all ground floor windows and sliding doors
- ▲ Smeg Appliances to Kitchen
- ▲ Floor coverings throughout
- ▲ Silestone benchtops to Kitchen and Ensuite(s) Bathroom
- ▲ Base Cabinetry to Laundry
- ▲ and much more ...

edge
inclusions



Please Contact
Sandy Dique
0409010825
sandyd@urbanedgehomes.com.au

Luxury Redefined
urbanedgehomes.com.au

