

Price includes standard floorplan with S1 facade.



Furniture, feature lighting, landscaping, driveway, window furnishings, and porch decking not provided by Eight Homes.

FIRST HOME BUYERS PRICE \$811,605 ^

## FIXED PRICE HOUSE & LAND

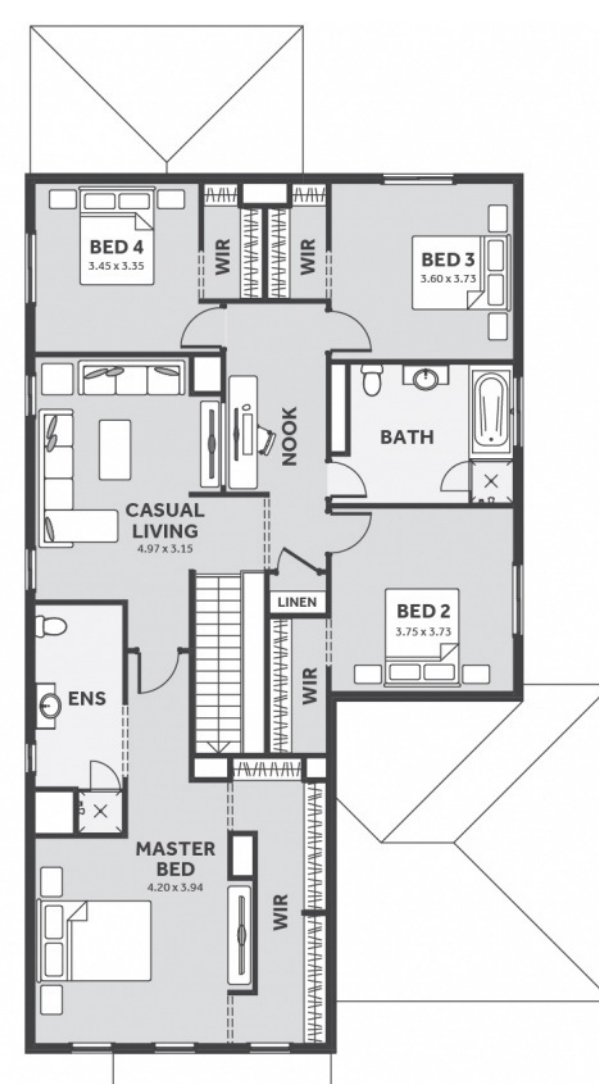
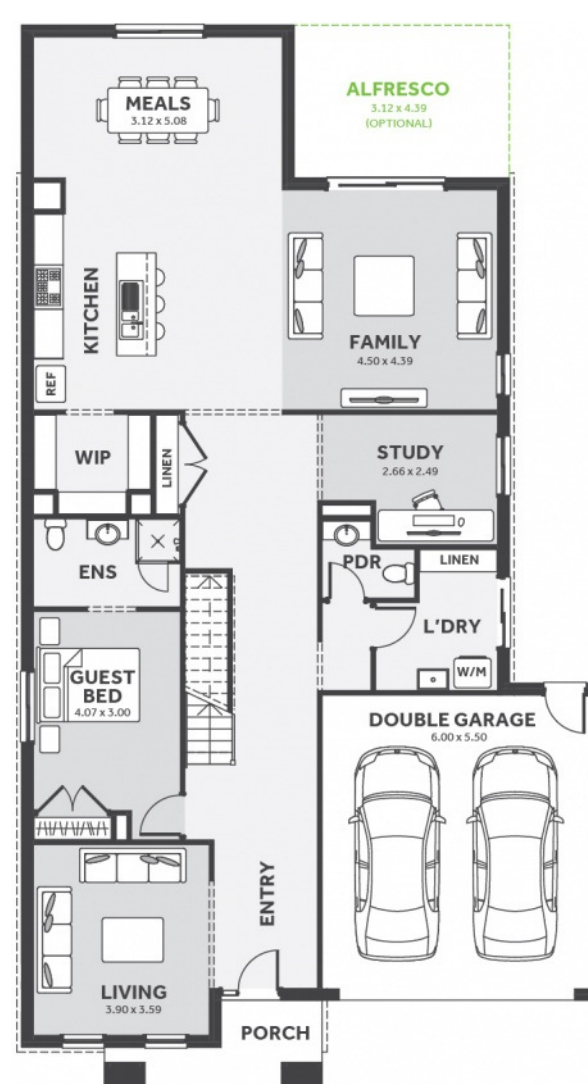
**d FIVE**

Lot 608, Colethe Road  
LAND SIZE: 392.00m<sup>2</sup>



359.98m<sup>2</sup> | 38.75 sqs

- ✓ Council and Developer Requirements
- ✓ 25 Year Structural Guarantee
- ✓ \$888 Deposit
- ✓ Stone bench tops & overhead cupboards to the kitchen
- ✓ 900mm appliances & dishwasher to the kitchen
- ✓ Tiled Shower Bases
- ✓ Choice of tiles or timber look laminate flooring
- ✓ Driveway & Garage door remotes



Please Contact  
Harry Singh  
0493 222 303  
harrys@8homes.com.au

*We make it easy!*