

Price includes standard floorplan with Q4-BUILD OVER facade.



Artist impression. Furniture, landscaping, driveway, window furnishing and porch decking is not provided by Urbanedge Homes.

FIRST HOME BUYERS PRICE \$864,703 ^

FIXED PRICE HOUSE & LAND

Jardene 2-31

Lot 4201, Willey Road
LAND SIZE: 351.00m²

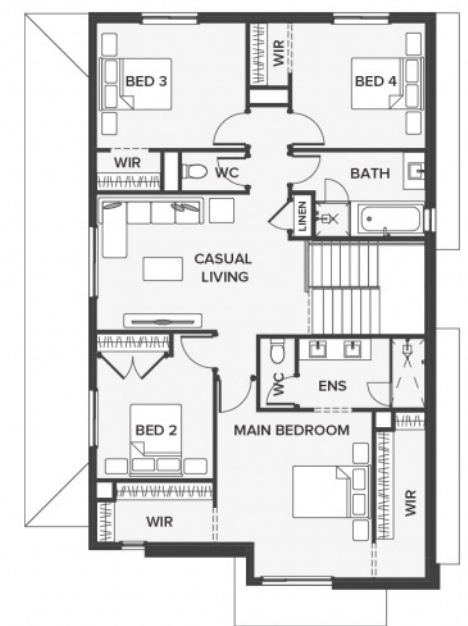
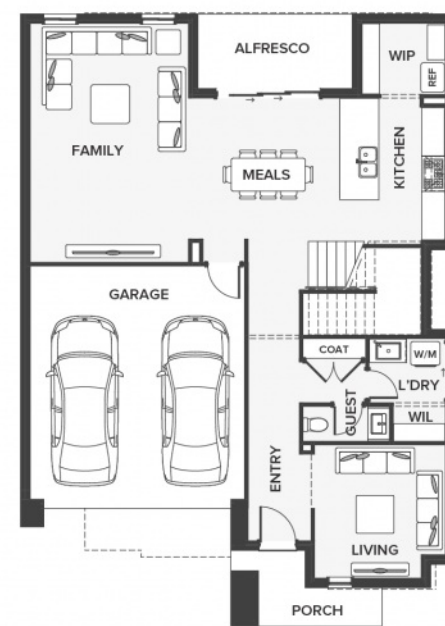
SMITHS LANE

4 2 2

283.25m² | 30.49 sqs

- ▲ Architecturally inspired fully rendered facade
- ▲ Brickwork or rendered foam above all ground floor windows and sliding doors
- ▲ Smeg Appliances to Kitchen
- ▲ Floor coverings throughout
- ▲ Silestone benchtops to Kitchen and Ensuite(s) Bathroom
- ▲ Base Cabinetry to Laundry
- ▲ and much more ...

edge
inclusions



Please Contact
Mark Berrell
0422 546 201
markb@urbanedgehomes.com.au

Luxury Redefined
urbanedgehomes.com.au

