

Price includes standard floorplan with S1 facade.



Furniture, feature lighting, landscaping, driveway, window furnishings, and porch decking not provided by Eight Homes.

FIRST HOME BUYERS PRICE \$805,812 ^

FIXED PRICE HOUSE & LAND

d FIVE

Lot 35124, Souter Avenue

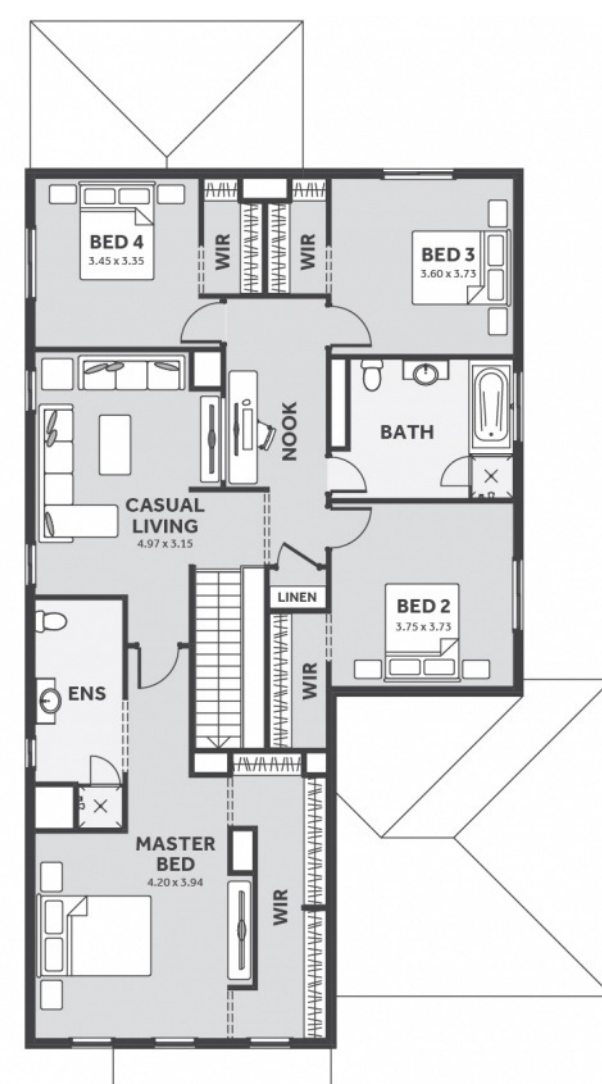
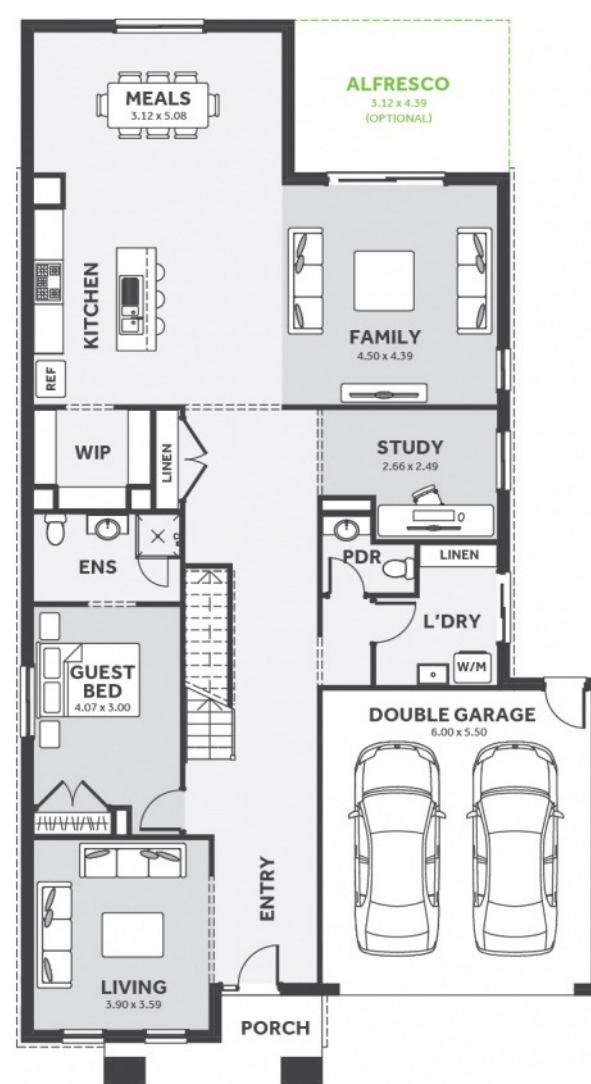
LAND SIZE: 392.00m²

Cloverton

5 3.5 2

359.98m² | 38.75 sqs

- ✓ Council and Developer Requirements
- ✓ 25 Year Structural Guarantee
- ✓ \$888 Deposit
- ✓ Stone bench tops & overhead cupboards to the kitchen
- ✓ 900mm appliances & dishwasher to the kitchen
- ✓ Tiled Shower Bases
- ✓ Choice of tiles or timber look laminate flooring
- ✓ Driveway & Garage door remotes



Please Contact
Harry Singh
0493 222 303
harrys@8homes.com.au

We make it easy!