

Price includes standard floorplan with STANDARD 12.5-16M BUILD OVER. JPEG facade.



Artist impression. Furniture, landscaping, driveway, window furnishing and porch decking is not provided by Urbanedge Homes.

FIRST HOME BUYERS PRICE \$778,350 ^

FIXED PRICE HOUSE & LAND

Elkaani 2-28

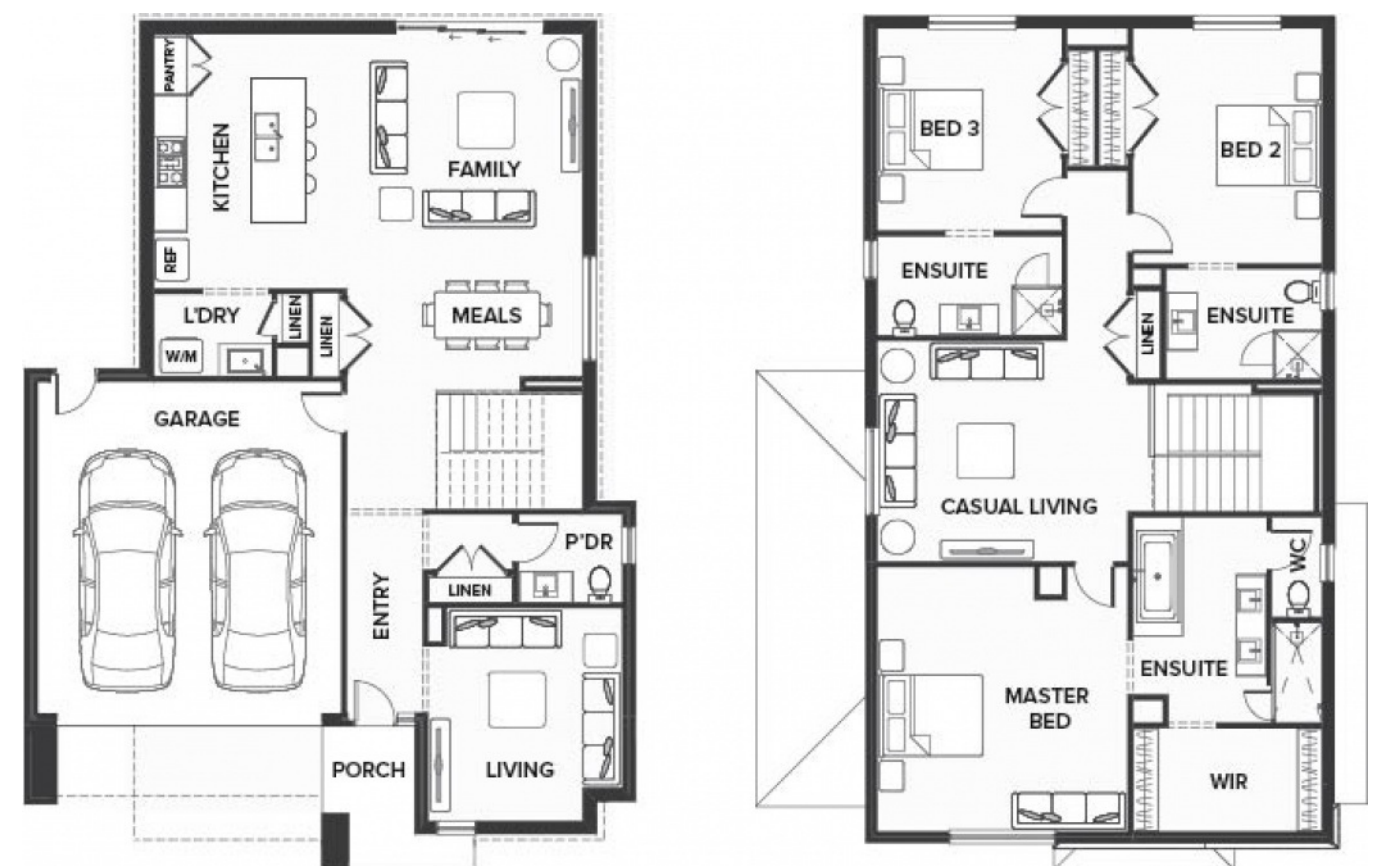
Lot 918, Triller Street
LAND SIZE: 285.00m²



260.67m² | 28.06 sqs

- ▲ Architecturally inspired fully rendered facade
- ▲ Brickwork or rendered foam above all ground floor windows and sliding doors
- ▲ Smeg Appliances to Kitchen
- ▲ Floor coverings throughout
- ▲ Silestone benchtops to Kitchen and Ensuite(s) Bathroom
- ▲ Base Cabinetry to Laundry
- ▲ and much more ...

edge
inclusions



Please Contact
Viola Vito
0423518385
viola.vito@urbanedgehomes.com.au

Luxury Redefined
urbanedgehomes.com.au