

Price includes standard floorplan with STANDARD facade.



Artist impression. Furniture, landscaping, driveway, window furnishing and porch decking is not provided by Urbanedge Homes.

FIRST HOME BUYERS PRICE \$679,766 ^

FIXED PRICE HOUSE & LAND

Maya 2-17_3Bed

Lot 3133, Brighton Avenue
LAND SIZE: 313.00m²

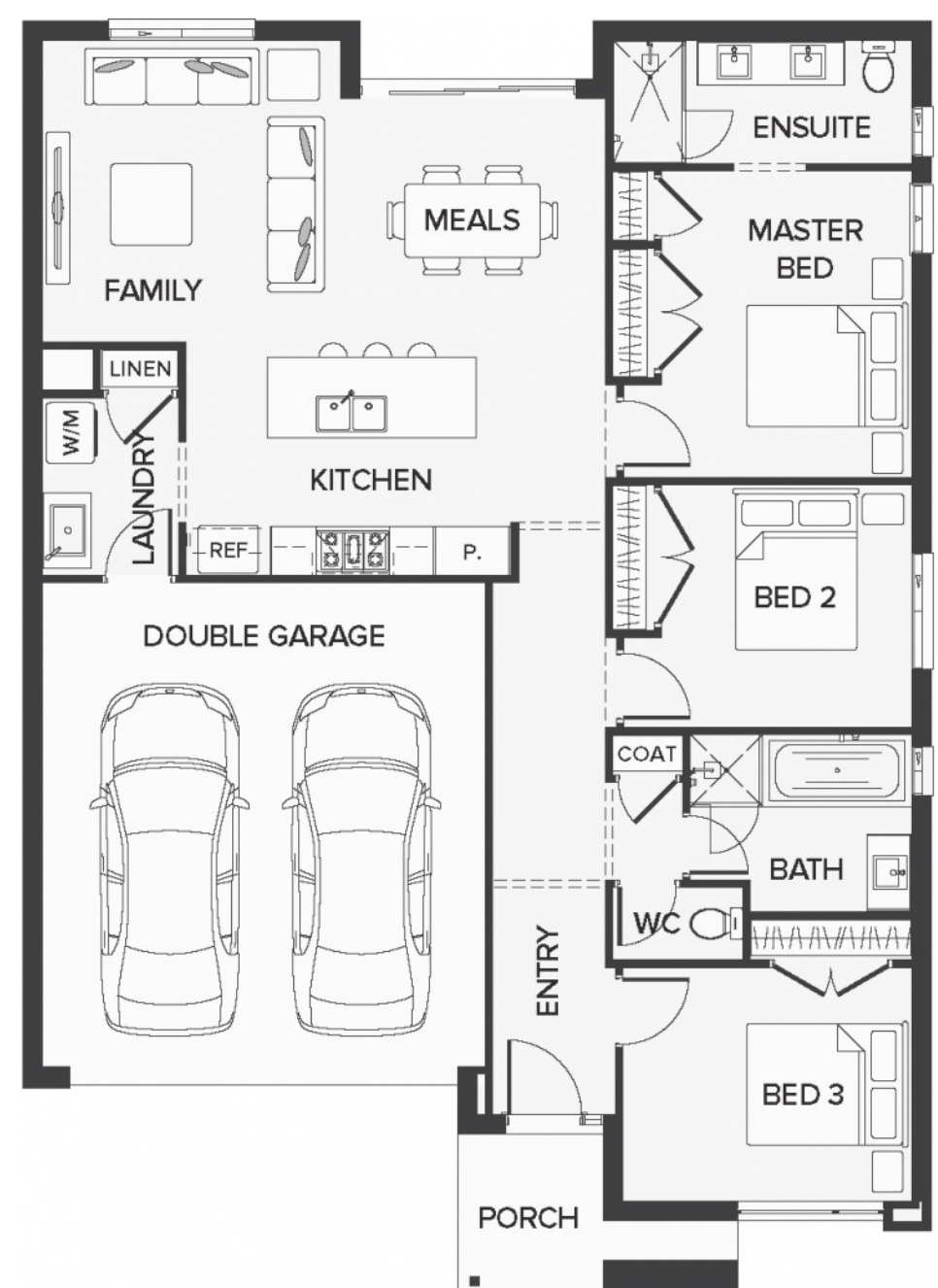
RATHDOWNE
WOLLERT



159.88m² | 17.21 sqs

- ▲ Architecturally inspired fully rendered facade
- ▲ Brickwork or rendered foam above all ground floor windows and sliding doors
- ▲ Smeg Appliances to Kitchen
- ▲ Floor coverings throughout
- ▲ Silestone benchtops to Kitchen and Ensuite(s) Bathroom
- ▲ Base Cabinetry to Laundry
- ▲ and much more ...

edge
inclusions



Please Contact
Rony Warda
0422 146 756
ronyw@urbanedgehomes.com.au

Luxury Redefined
urbanedgehomes.com.au