

\$22k
OFF!*

FIXED PRICE
HOUSE & LAND

Riverfield
CLYDE

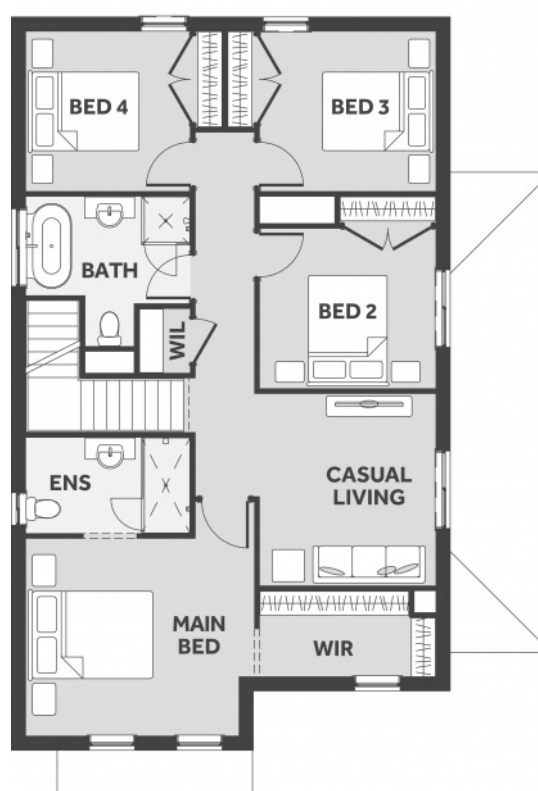
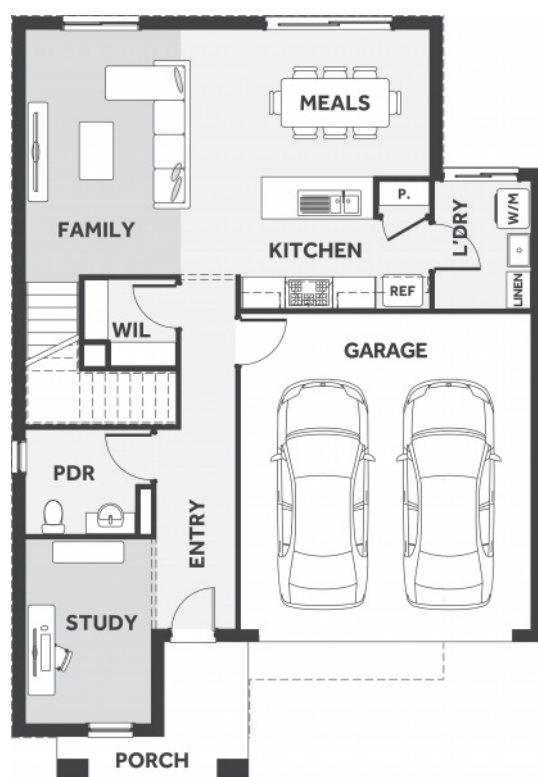
\$688,576*

FIRST HOME BUYERS PRICE \$678,576^

Discount has been applied to package price

Price includes standard floorplan with S3 facade.

\$888 preliminary fee to secure the home price



ZUI 2-25

4 bedrooms, 2 bathrooms, 1 study, 2 car spaces

25.15 sqs | 233.64m²

Lot 2115, Citron Way

Land Size: 288m²

INCLUSIONS

- 7 Star Energy rating compliant to the standard from and best house orientation^s
- Double glazed windows[†]
- 4kw solar system (design specific)
- Up to 36m² Driveway colour through concrete[‡]
- Fixed site costs and connections
- Quantum zero benchtop & overhead cupboards to kitchen
- 900mm appliances & dishwasher to kitchen
- Choice of tiles or timber-look laminate flooring
- 20 downlights to the home
- Round Back to Wall Freestanding Bath
- Colorbond roof
- 25-year structural guarantee
- Council & developer requirements