

# Jumeirah 6-56

**55.66** m+  
lot width

width **16 m+** | depth **30 m+**



**Exterior Width:** **14070 mm**  
**Exterior Length:** **22530 mm**

## Dimensions

Living	457.91 m <sup>2</sup>	49.29 sqs
Garage	37.19 m <sup>2</sup>	4.00 sqs
Portch	5.53 m <sup>2</sup>	0.60 sqs
Alfresco	16.40 m <sup>2</sup>	1.77 sqs
Balcony	0.00 m <sup>2</sup>	0.00 sqs
Optional Alfresco	0.00 m <sup>2</sup>	0.00 sqs

**Total 517.08m<sup>2</sup> | 55.66 sqs**

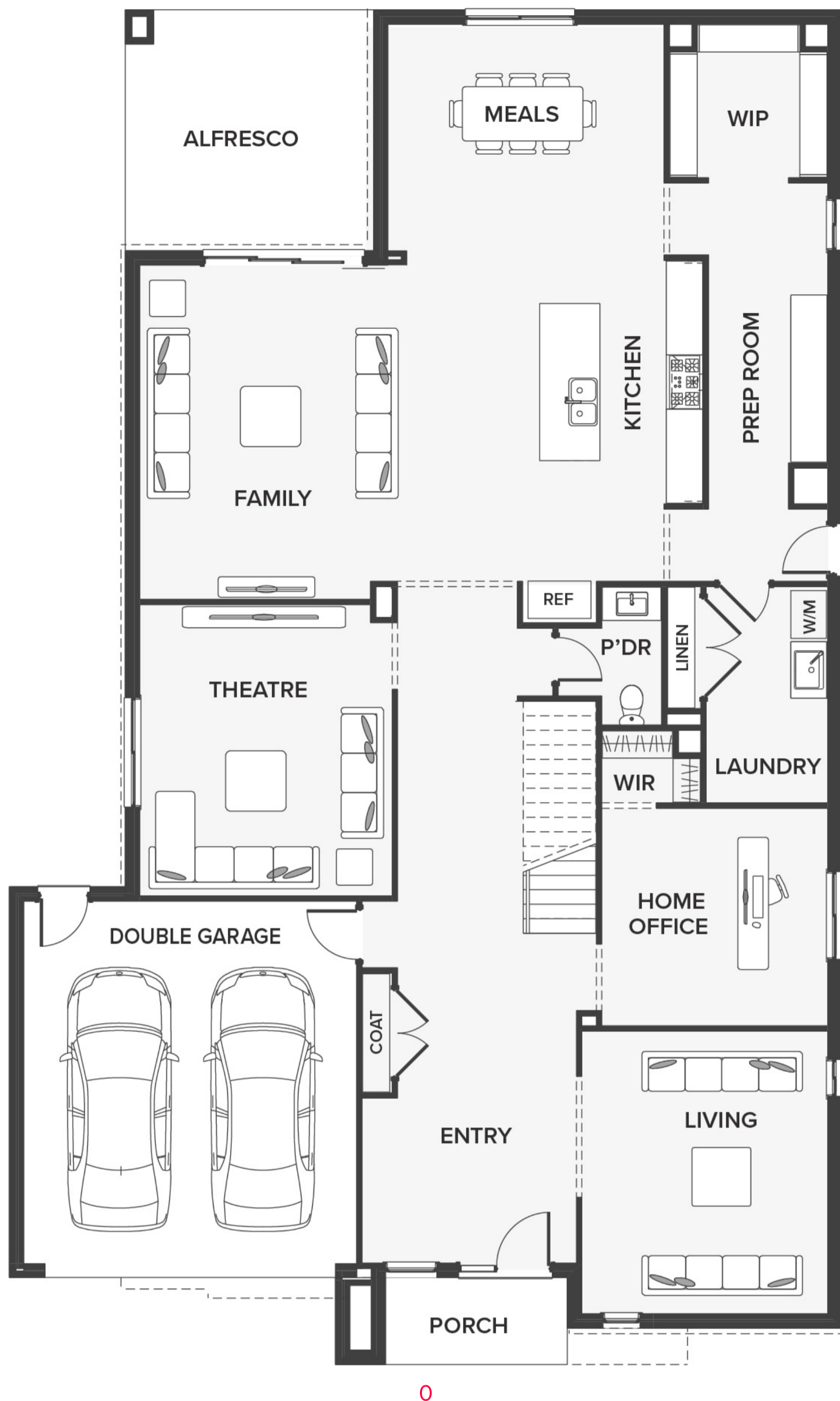
Floorplan images and measurements are to be used as a guide only. Please refer to specific working drawings for details.

For more information please visit:

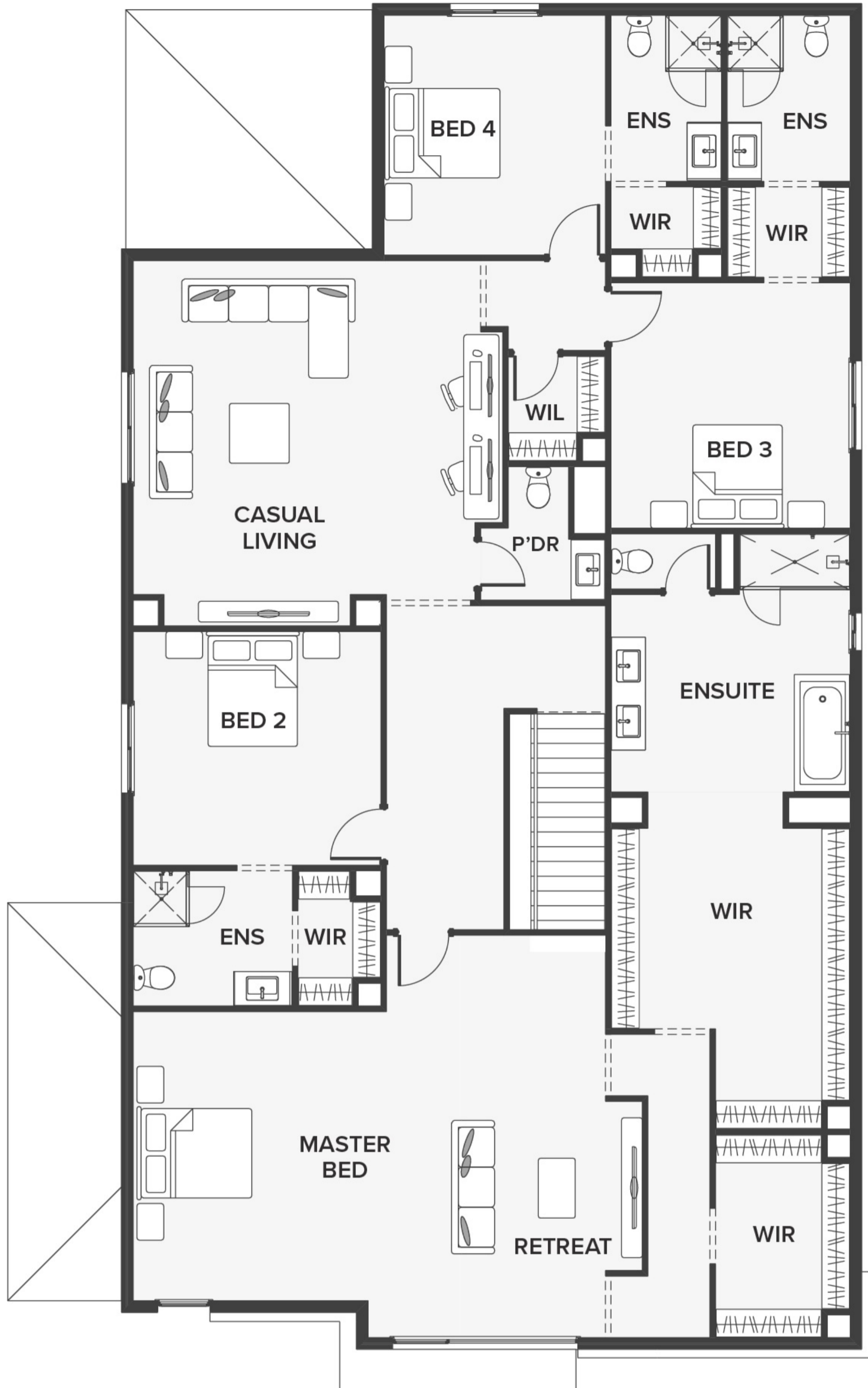
[www.houseandlandworld.com](http://www.houseandlandworld.com)

or call:

**1300 HL WORLD**



0



1