

Price includes standard floorplan with S1 facade.



Furniture, feature lighting, landscaping, driveway, window furnishings, and porch decking not provided by Eight Homes.

FIRST HOME BUYERS PRICE \$758,839

FIXED PRICE HOUSE & LAND

S FIVE

Lot 9004, Eliza Park Drive

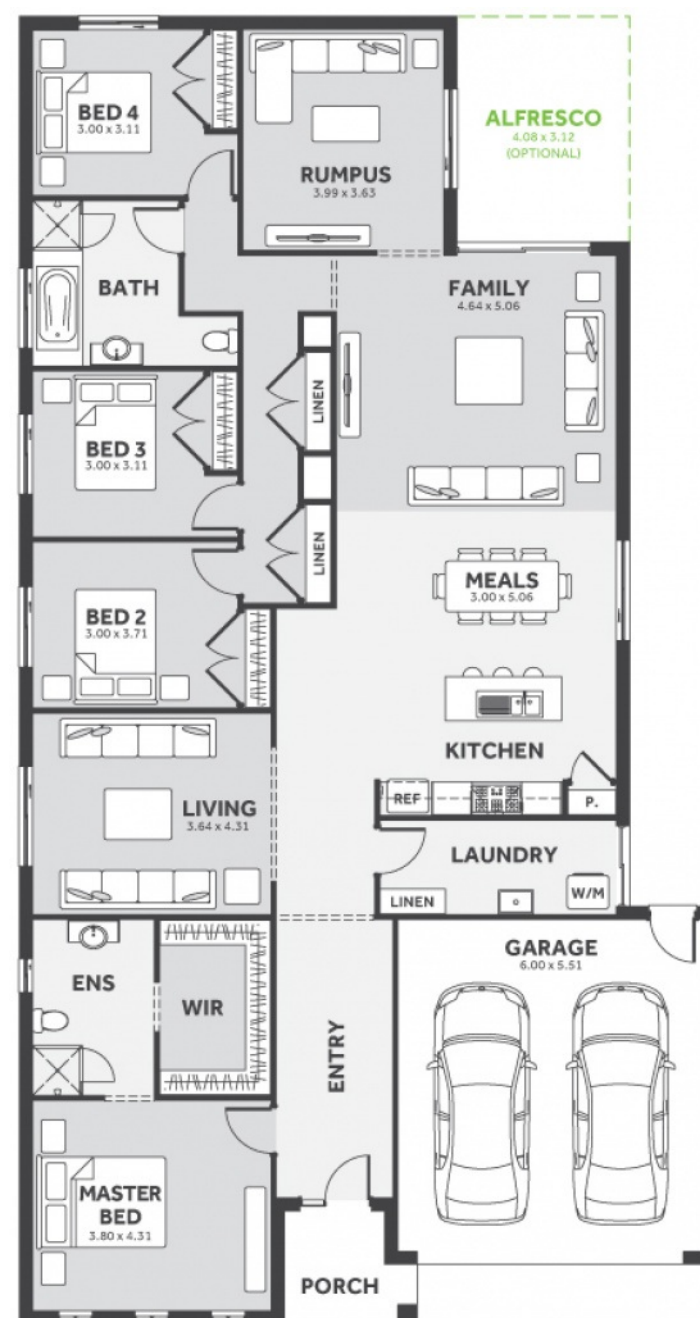
LAND SIZE: 607.00m²



4 2.0 2

253.89m² | 27.33 sqs

- ✓ Council and Developer Requirements
- ✓ 12 Month Price Freeze
- ✓ 25 Year Structural Guarantee
- ✓ \$888 Deposit
- ✓ Efficient and Simple
- ✓ Stone bench tops & 900mm appliances to Kitchen
- ✓ Stylish 8mm timber look laminate flooring
- ✓ Driveway



Please Contact

Tony Cursaro

0481 294 133

tonyc@8homes.com.au

We make it easy!