

Price includes standard floorplan with S1 facade.



Furniture, feature lighting, landscaping, driveway, window furnishings, and porch decking not provided by Eight Homes.

FIRST HOME BUYERS PRICE \$555,276

## FIXED PRICE HOUSE & LAND

## Abel 1-18

Lot 411, Basin Court Fraser Rise

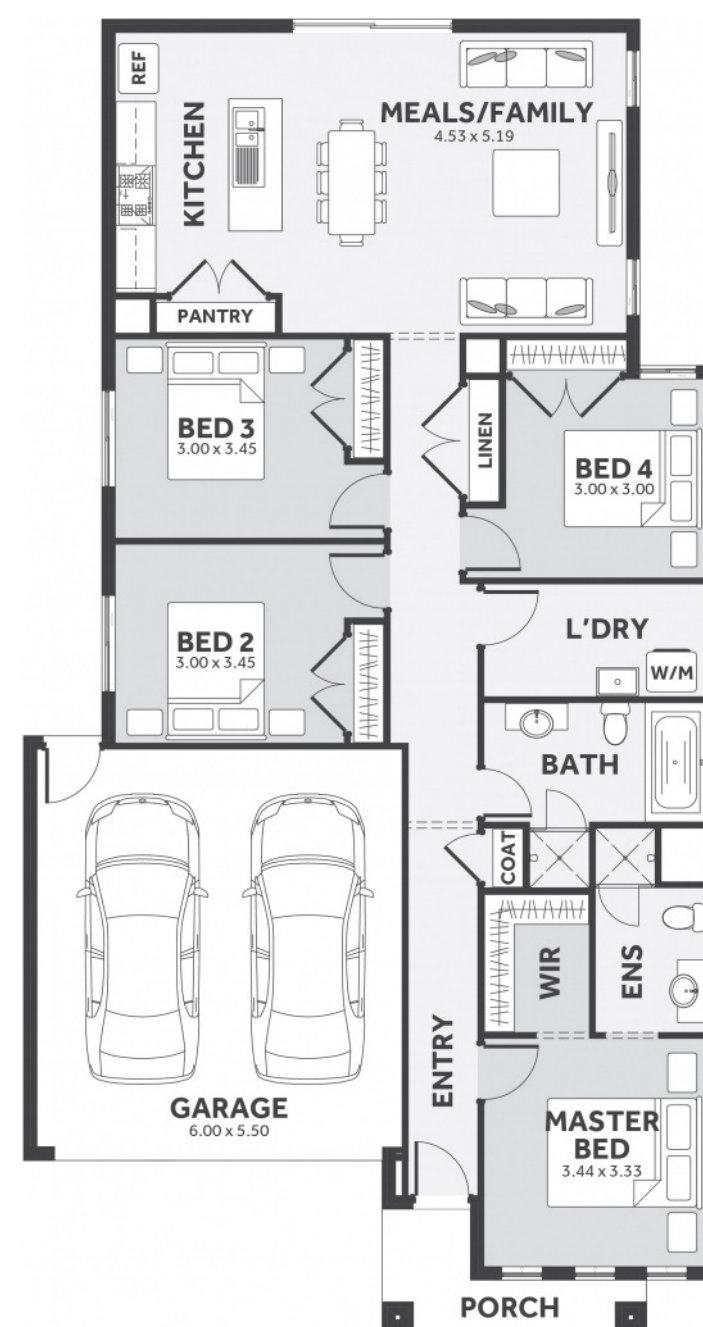
LAND SIZE: 294.00m<sup>2</sup>

Taylors  
Run

4 2.0 2

173.35m<sup>2</sup> | 18.66 sqs

- ✓ Council and Developer Requirements
- ✓ 12 Month Price Freeze
- ✓ 25 Year Structural Guarantee
- ✓ \$888 Deposit
- ✓ Efficient and Simple
- ✓ Stone bench tops & 900mm appliances to Kitchen
- ✓ Stylish 8mm timber look laminate flooring
- ✓ Driveway



Please Contact

Tracy Smith

0431 224 663

tracys@8homes.com.au

*We make it easy!*