

Price includes standard floorplan with Q1SANAFACADEUE109DBG facade.

Q1 Facade

Artist impression. Furniture, landscaping, driveway, window furnishing and porch decking is not provided by Urbanedge Homes.

FIRST HOME BUYERS PRICE \$823,961 ^

FIXED PRICE HOUSE & LAND

Jardene 2-31

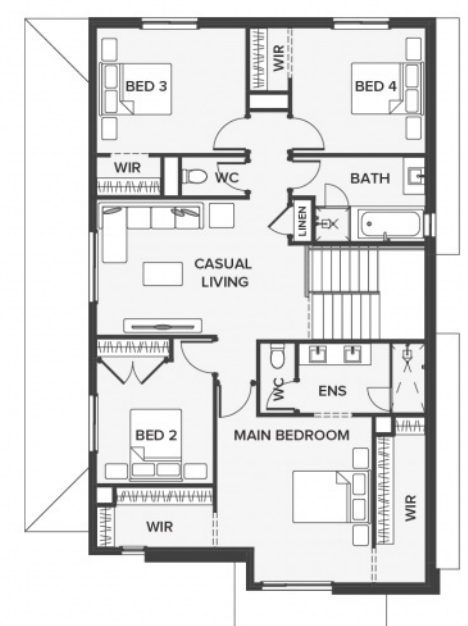
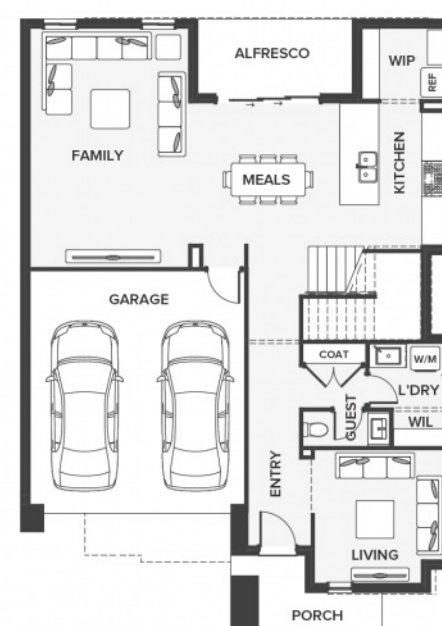
Lot 3037, Angelic Circuit
LAND SIZE: 350.00m²



283.25m² | 30.49 sqs

- ▲ Architecturally inspired fully rendered facade
- ▲ Brickwork or rendered foam above all ground floor windows and sliding doors
- ▲ Smeg Appliances to Kitchen
- ▲ Floor coverings throughout
- ▲ Silestone benchtops to Kitchen and Ensuite(s) Bathroom
- ▲ Base Cabinetry to Laundry
- ▲ and much more ...

edge
inclusions



Please Contact
Sujen Bhashkar
0412 357 732
sujenb@urbanedgehomes.com.au

Luxury Redefined
urbanedgehomes.com.au

