

Price includes standard floorplan with S1 facade.



Furniture, feature lighting, landscaping, driveway, window furnishings, and porch decking not provided by Eight Homes.

FIRST HOME BUYERS PRICE **\$645,966**

## FIXED PRICE HOUSE & LAND

### S.SIX.3

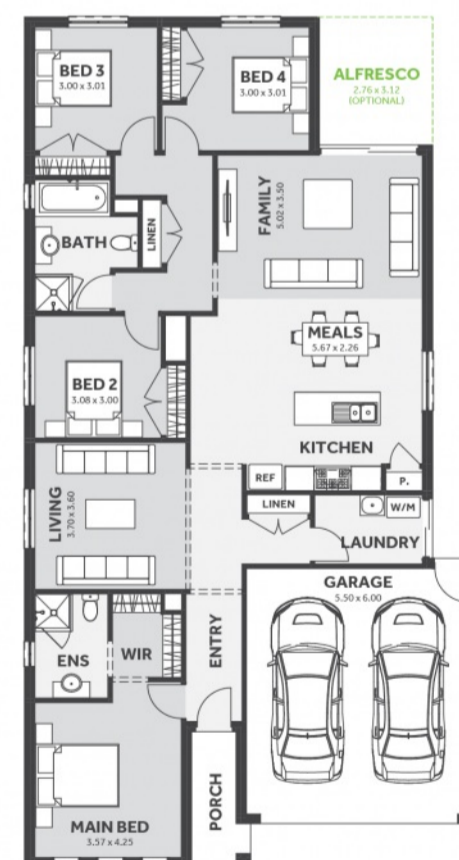
Lot 1035, Chiswell Ave Fraser Rise  
LAND SIZE: 350.00m<sup>2</sup>



 4  2.0  2

**209.39m<sup>2</sup>** | **22.54 sqs**

- ✓ Council and Developer Requirements
- ✓ 12 Month Price Freeze
- ✓ 25 Year Structural Guarantee
- ✓ \$888 Deposit
- ✓ Efficient and Simple
- ✓ Stone bench tops & 900mm appliances to Kitchen
- ✓ Stylish 8mm timber look laminate flooring
- ✓ Driveway



Please Contact  
Shannon Minett  
0451 120 075  
shannonm@8homes.com.au

*We make it easy!*

