

Price includes standard floorplan with STANDARD STRUCTURE WITH CEDAR CLAD facade.



Artist impression. Furniture, landscaping, driveway, window furnishing and porch decking is not provided by Urbanedge Homes.

FIRST HOME BUYERS PRICE \$1,132,950 ^

FIXED PRICE HOUSE & LAND

Autern 5-50

Lot 3705, Carora Circuit
LAND SIZE: 512.00m²

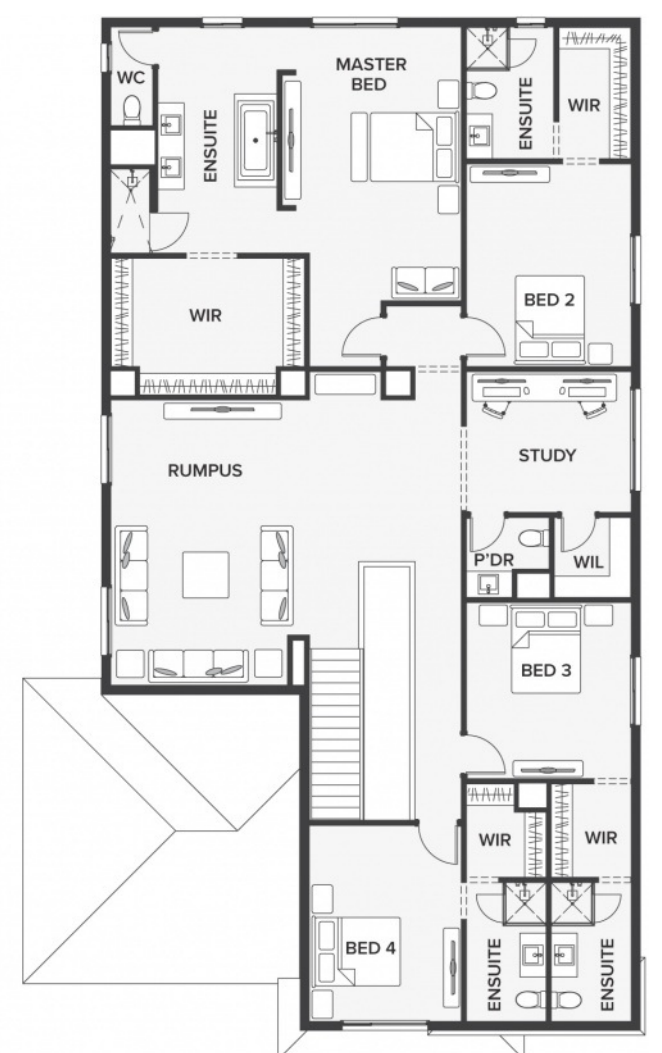
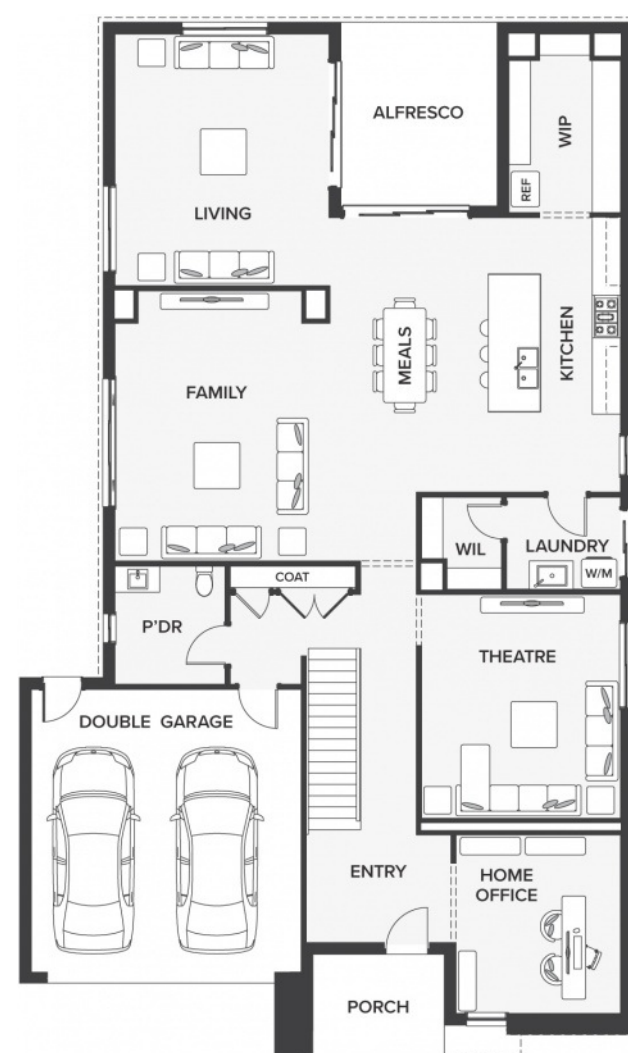
MERIDIAN
CLYDE NORTH

4 5 2

457.62m² | 49.26 sqs

- ▲ Architecturally inspired fully rendered facade
- ▲ Brickwork or rendered foam above all ground floor windows and sliding doors
- ▲ Smeg Appliances to Kitchen
- ▲ Floor coverings throughout
- ▲ Silestone benchtops to Kitchen and Ensuite(s) Bathroom
- ▲ Base Cabinetry to Laundry
- ▲ and much more ...

edge
inclusions



Please Contact
melanie richard
0427 443 936
melanie.richard@urbanedgehomes.com.au

Luxury Redefined
urbanedgehomes.com.au