

Price includes standard floorplan with STANDARD facade.



Artist impression. Furniture, landscaping, driveway, window furnishing and porch decking is not provided by Urbanedge Homes.

FIRST HOME BUYERS PRICE \$557,694 ^

FIXED PRICE

HOUSE & LAND

Maya 2-17\_3Bed

Lot 1925, POITIERS STREET

LAND SIZE: 275.00m<sup>2</sup>



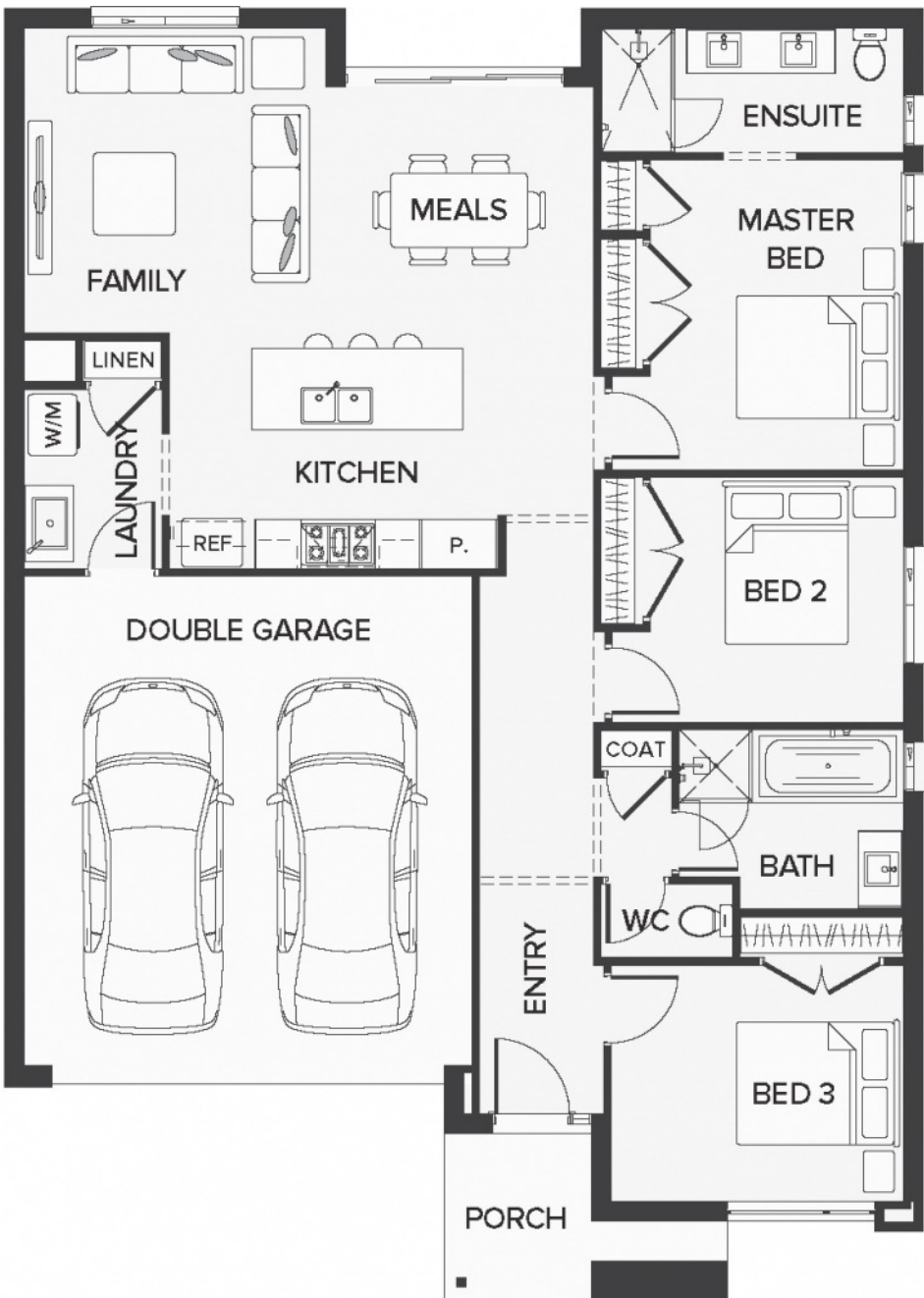
3

2

2

159.88m<sup>2</sup> | 17.21 sqs

- Architecturally inspired fully rendered facade
- Brickwork or rendered foam above all ground floor windows and sliding doors
- Smeg Appliances to Kitchen
- Floor coverings throughout
- Silestone benchtops to Kitchen and Ensuite(s) Bathroom
- Base Cabinetry to Laundry
- and much more ...



Please Contact

Viola Vito

0423518385

viola.vito@urbanedgehomes.com.au

LuxuryRedefined

urbanedgehomes.com.au

\*Price is based on the standard floorplan and façade shown above. Urbanedge Homes reserves the right to change prices/promotions without notification. Subject to developer's design review panel final approval. Package price is based on builder's preferred siting. Images are for illustrative purposes and are to be used as a guide only. Urbanedge Homes does not provide furniture, décor, landscaping or decking. Please refer to house specific inclusions and working drawings for all details. ^Available to first home buyers eligible for the state government First Home Owners Grant. For details visit [www.sro.vic.gov.au](http://www.sro.vic.gov.au). Mahercorp Pty. Ltd. DBU 1994.