

Price includes standard floorplan with S1 facade.



FIXED PRICE HOUSE & LAND

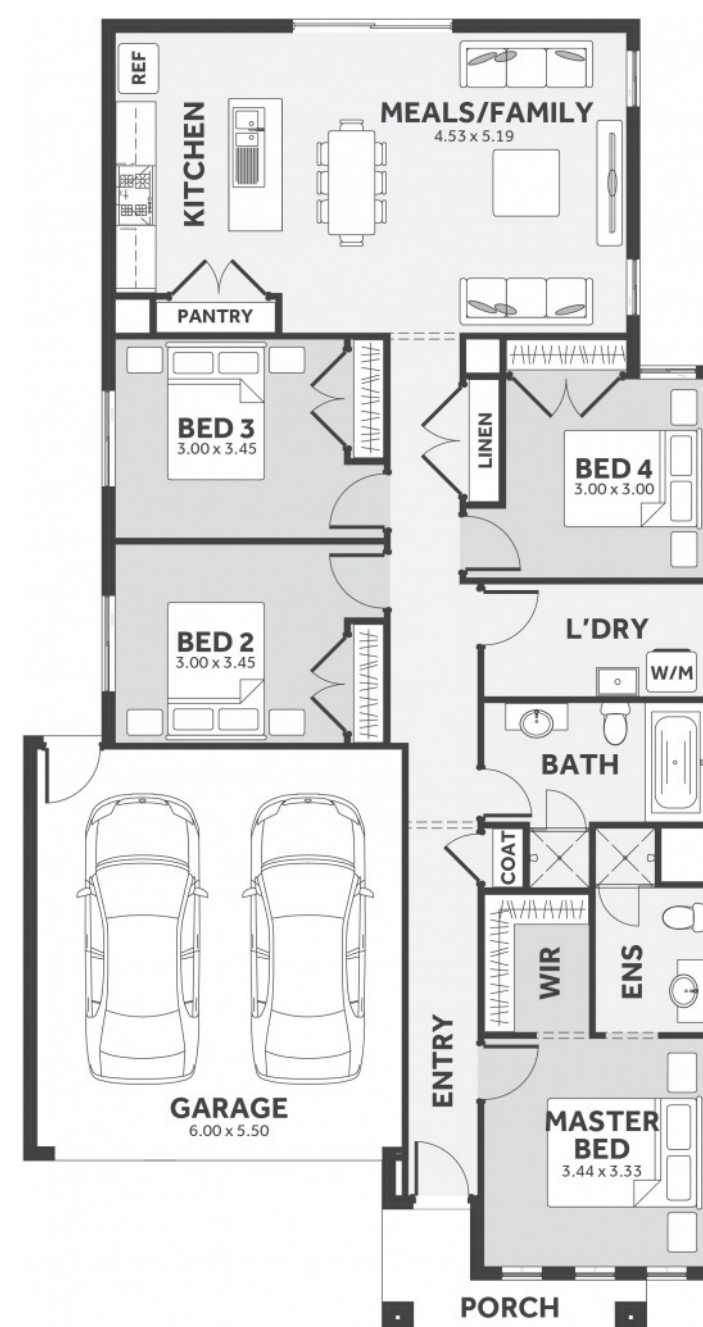
Abel 1-18

Lot 435, Nitre Street
LAND SIZE: 294.00m²



173.35m² | 18.66 sqs

- ✓ Council and Developer Requirements
- ✓ 25 Year Structural Guarantee
- ✓ \$888 Deposit
- ✓ Stone bench tops & overhead cupboards to the kitchen
- ✓ 900mm appliances & dishwasher to the kitchen
- ✓ Tiled Shower Bases
- ✓ Choice of tiles or timber look laminate flooring
- ✓ Driveway & Garage door remotes



Please Contact

Eva Abenir

0433 574 468

Evaa@8homes.com.au

We make it easy!