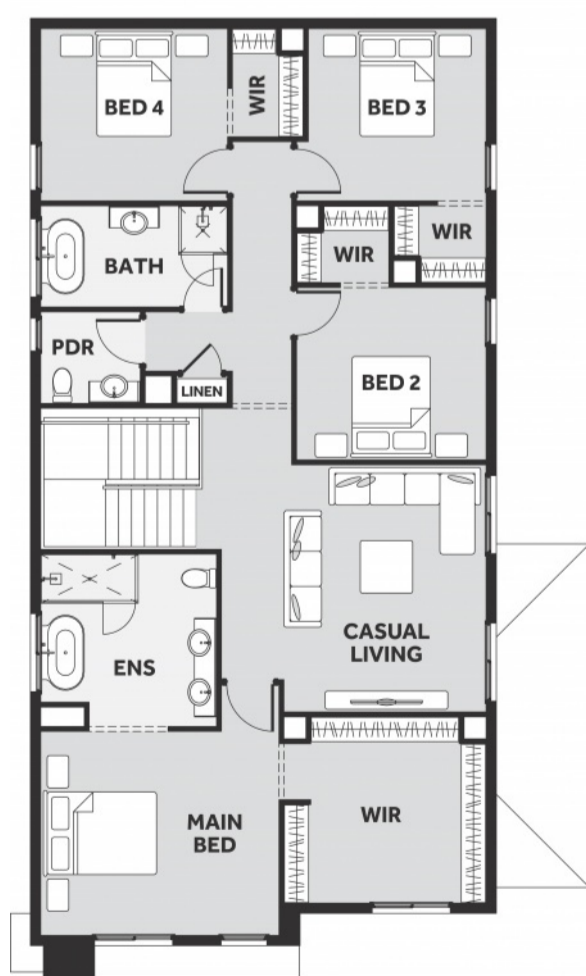
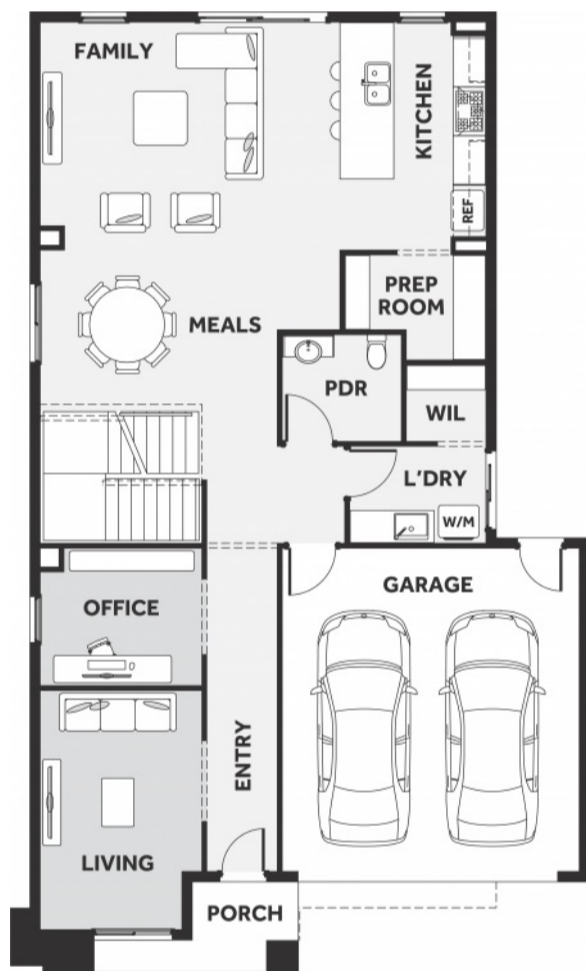


Taylors Rise
SEASIDE



\$849,610*

FIRST HOME BUYERS PRICE **\$839,610[^]**

Price includes standard floorplan with Avery facade.

\$888 preliminary fee to secure the home price

Maisa 2-33



33.03 sqs | 306.84m²

Lot 315, Crake Drive

Land Size: **350m²**

INCLUSIONS

- 7 Star Energy rating compliant in the standard form and best house orientation[§]
- Double glazed windows[†]
- 4kw solar system (design specific)
- 900mm built in Artusi Oven and Cooktop
- 40mm square edge Quantum zero kitchen benchtop with 16mm shadowline
- 2740mm ceiling height (ground floor only)
- Timber Hardwood Closed Staircase
- 40 downlights throughout the home
- Colourbond Roof
- Up to 36m² Driveway colour through concrete[‡]
- Fixed Site Costs and OHS Requirements
- Developer Requirements
- 25 Year Structural Warranty

Kimberley McIntyre
0468305237
kimberley.mcintyre@8homes.com.au

*Price is based on the standard floorplan and facade shown. Eight homes reserve the right to change prices/promotions without notification. Subject to developer's design review panel final approval. Package price is based on builder's preferred siting. Images are for illustrative purposes and are to be used as a guide only. Eight Homes does not provide furniture, decor, landscaping and decking. Please refer to the house and land inclusions and house specific working drawings for all details. §Speak to your Sales Consultant for further information on how your home best suits your block and how changes may impact your energy rating. † Double glazed windows apply to standard Eight Homes floorplans and facades. Changes/upgrades to floorplan, facade or windows (including size changes, additional windows) may incur an additional cost. ‡ Garage side setbacks greater than 200mm and garage extensions may incur additional costs due to driveway size - includes grated strip drain. ^Available to first home buyers eligible for the state government First Homeowners Grant. For details visit www.sro.vic.gov.au Eight Homes DBU 1994