

Price includes standard floorplan with STANDARD facade.



FIXED PRICE

HOUSE & LAND

Yoki 1-14

Lot 3651, Tessy Way

LAND SIZE: 231.00m²



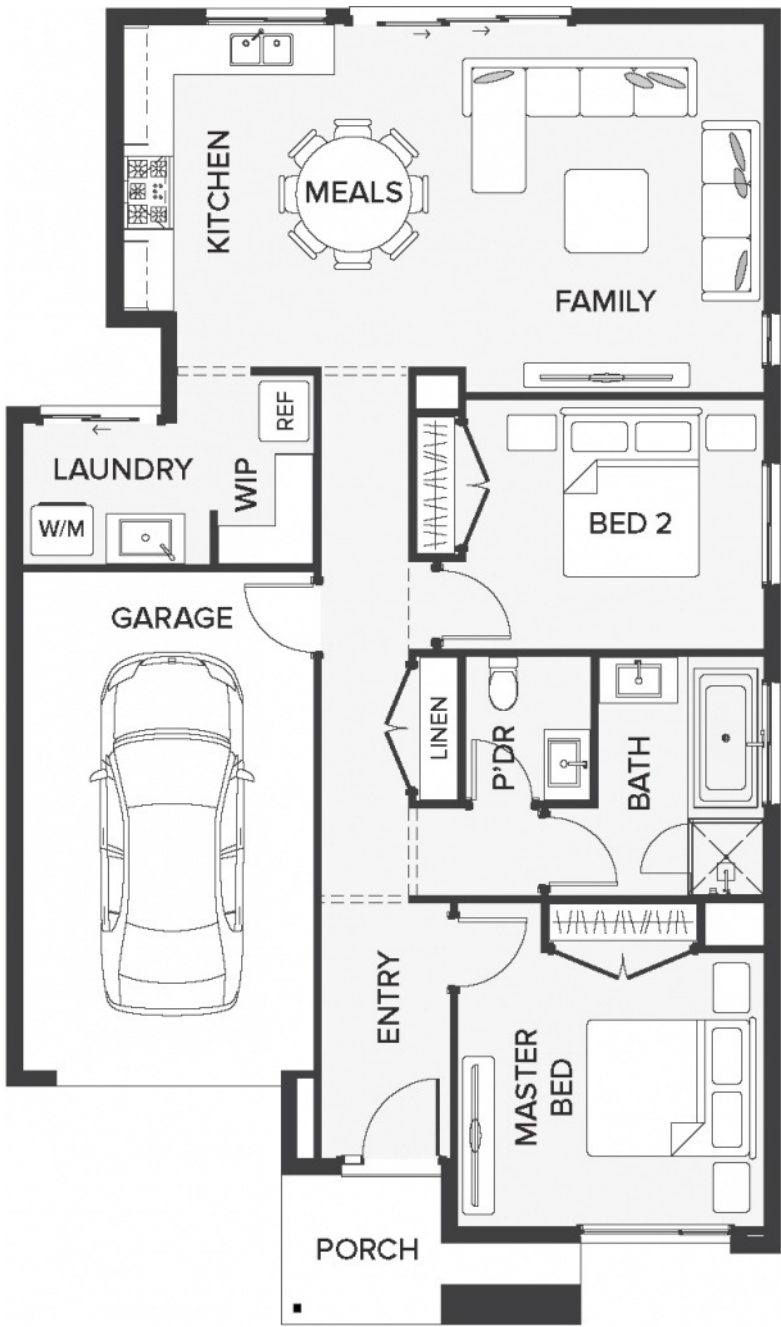
2

1

1

129.13m² | 13.90 sqs

- Architecturally inspired fully rendered facade
- Brickwork or rendered foam above all ground floor windows and sliding doors
- Smeg Appliances to Kitchen
- Floor coverings throughout
- Silestone benchtops to Kitchen and Ensuite(s) Bathroom
- Base Cabinetry to Laundry
- and much more ...



Please Contact

Sujen Bhashkar

0412 357 732

sujenb@urbanedgehomes.com.au

LuxuryRedefined

urbanedgehomes.com.au

*Price is based on the standard floorplan and façade shown above. Urbanedge Homes reserves the right to change prices/promotions without notification. Subject to developer's design review panel final approval. Package price is based on builder's preferred siting. Images are for illustrative purposes and are to be used as a guide only. Urbanedge Homes does not provide furniture, décor, landscaping or decking. Please refer to house specific inclusions and working drawings for all details. ^Available to first home buyers eligible for the state government First Home Owners Grant. For details visit www.sro.vic.gov.au. Mahercorp Pty. Ltd. DBU 1994.