

Price includes standard floorplan with STANDARD STRUCTURE WITH CEDAR CLAD facade.



Artist impression. Furniture, landscaping, driveway, window furnishing and porch decking is not provided by Urbanedge Homes.

FIRST HOME BUYERS PRICE \$1,042,722 ^

FIXED PRICE
HOUSE & LAND

Jumeirah 6-49
Lot 1238, BOLSHOI BOULEVARD
LAND SIZE: 448.00m²

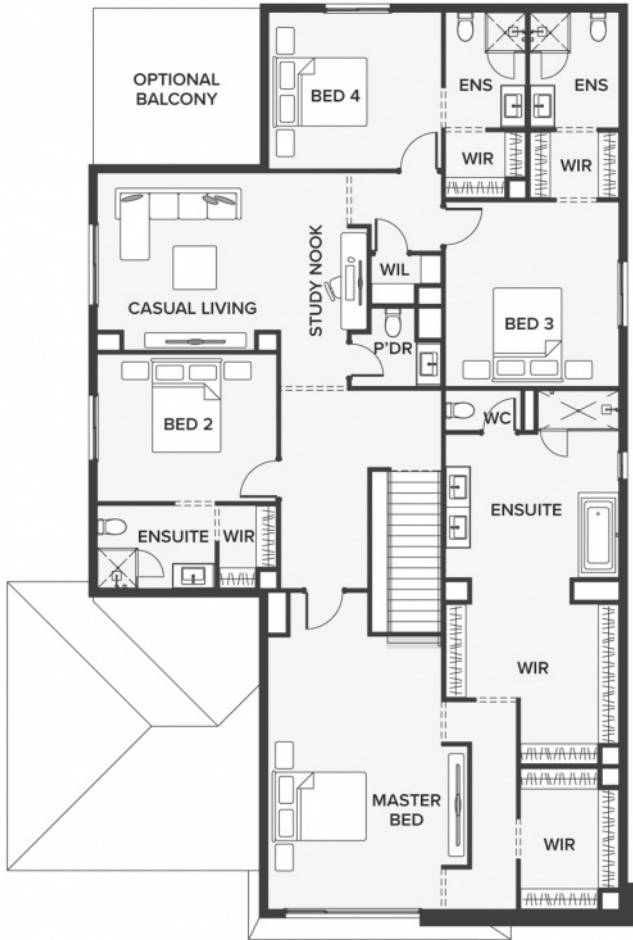
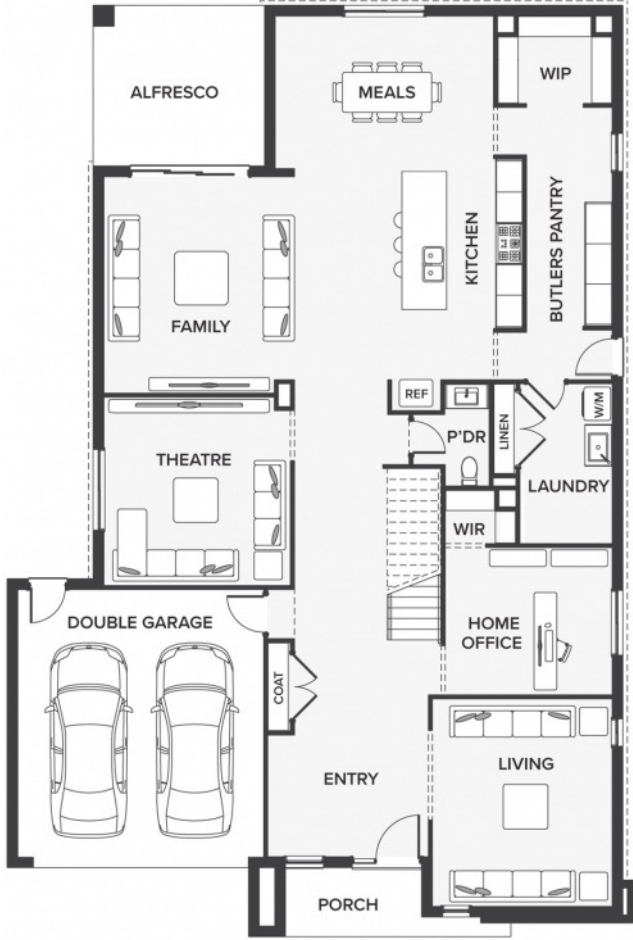


4 4 2

459.94m² | 49.51 sqs

- Architecturally inspired fully rendered facade
- Brickwork or rendered foam above all ground floor windows and sliding doors
- Smeg Appliances to Kitchen
- Floor coverings throughout
- Silestone benchtops to Kitchen and Ensuite(s) Bathroom
- Base Cabinetry to Laundry
- and much more ...

edge
inclusions



Please Contact
Kevin Chen
kevinc@urbanedgehomes.com.au

LuxuryRedefined
urbanedgehomes.com.au

*Price is based on the standard floorplan and façade shown above. Urbanedge Homes reserves the right to change prices/promotions without notification. Subject to developer's design review panel final approval. Package price is based on builder's preferred siting. Images are for illustrative purposes and are to be used as a guide only. Urbanedge Homes does not provide furniture, décor, landscaping or decking. Please refer to house specific inclusions and working drawings for all details. ^Available to first home buyers eligible for the state government First Home Owners Grant. For details visit www.sro.vic.gov.au. Mahercorp Pty. Ltd. DBU 1994.