

Price includes standard floorplan with STANDARD facade.



Artist impression. Furniture, landscaping, driveway, window furnishing and porch decking is not provided by Urbanedge Homes.

FIRST HOME BUYERS PRICE \$939,674 ^

## FIXED PRICE HOUSE & LAND

## Yoki 2-23 (4 bedroom)

Lot 672, Soldiers road  
LAND SIZE: 448.00m<sup>2</sup>

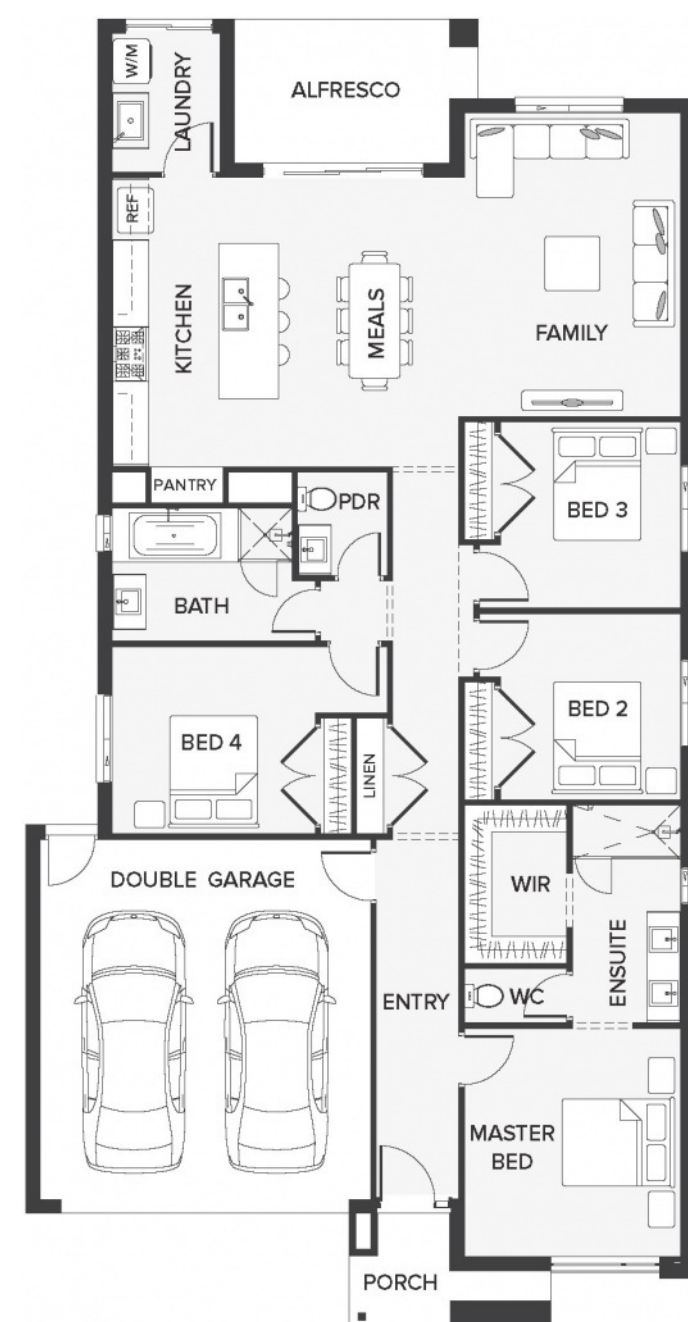
### MINTA



209.86m<sup>2</sup> | 22.59 sqs

- ▲ Architecturally inspired fully rendered facade
- ▲ Brickwork or rendered foam above all ground floor windows and sliding doors
- ▲ Smeg Appliances to Kitchen
- ▲ Floor coverings throughout
- ▲ Silestone benchtops to Kitchen and Ensuite(s) Bathroom
- ▲ Base Cabinetry to Laundry
- ▲ and much more ...

edge  
inclusions



Please Contact  
Daniel Wagner  
0400018139  
Daniel.wagner@urbanedgehomes.com.au

LuxuryRedefined  
urbanedgehomes.com.au