

Price includes standard floorplan with STANDARD\_SUBI 12.5M.JPEG facade.



Artist impression. Furniture, landscaping, driveway, window furnishing and porch decking is not provided by Urbanedge Homes.

FIRST HOME BUYERS PRICE \$749,110 ^

## FIXED PRICE HOUSE & LAND

## Subi 2-25

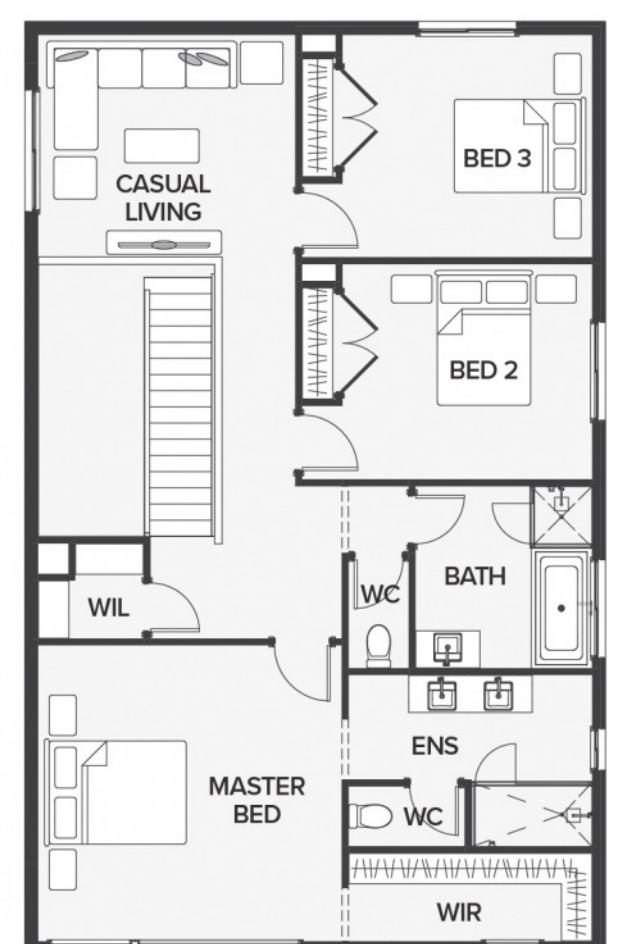
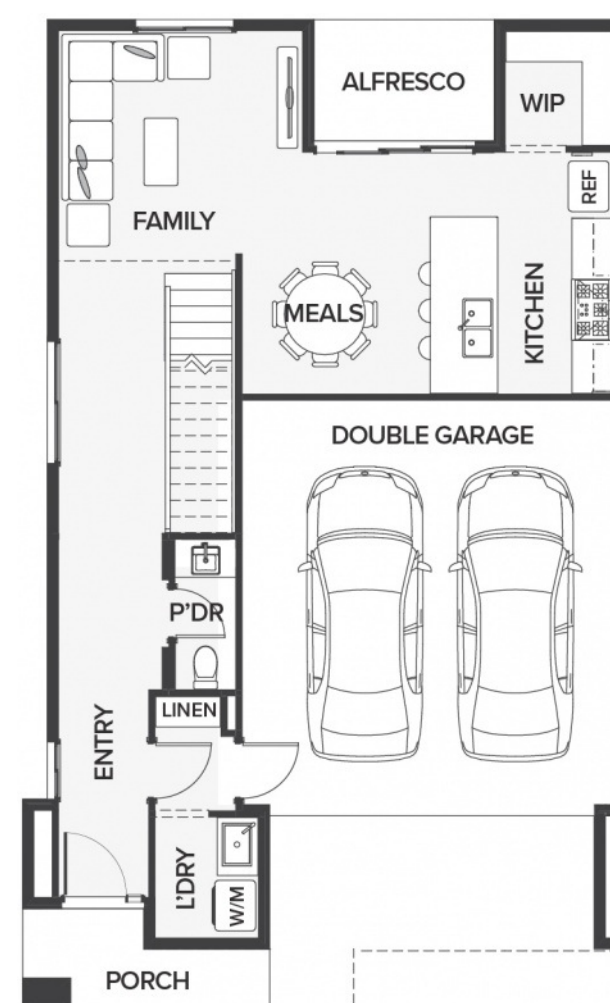
Lot 922, Triller Street  
LAND SIZE: 285.00m<sup>2</sup>



230.48m<sup>2</sup> | 24.81 sqs

- ▲ Architecturally inspired fully rendered facade
- ▲ Brickwork or rendered foam above all ground floor windows and sliding doors
- ▲ Smeg Appliances to Kitchen
- ▲ Floor coverings throughout
- ▲ Silestone benchtops to Kitchen and Ensuite(s) Bathroom
- ▲ Base Cabinetry to Laundry
- ▲ and much more ...

edge  
inclusions



Please Contact  
Viola Vito  
0423518385  
viola.vito@urbanedgehomes.com.au

Luxury Redefined  
urbanedgehomes.com.au