

Price includes standard floorplan with S1 facade.



Furniture, feature lighting, landscaping, driveway, window furnishings, and porch decking not provided by Eight Homes.

FIRST HOME BUYERS PRICE \$705,352 ^

## FIXED PRICE HOUSE & LAND

**S SIX**

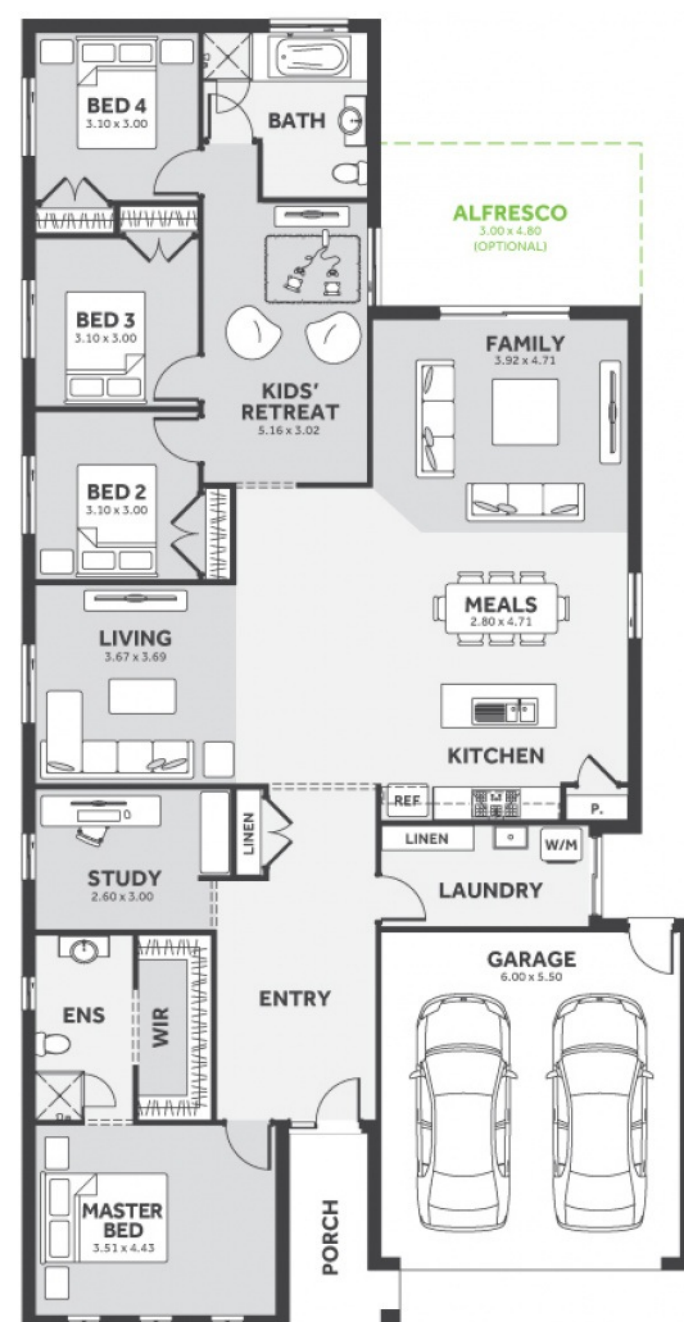
Lot 1305, Nowland Street  
LAND SIZE: 504.00m<sup>2</sup>

Willow  
GISBORNE

4 2.0 2

249.52m<sup>2</sup> | 26.86 sqs

- ✓ Council and Developer Requirements
- ✓ 25 Year Structural Guarantee
- ✓ \$888 Deposit
- ✓ Stone bench tops & overhead cupboards to the kitchen
- ✓ 900mm appliances & dishwasher to the kitchen
- ✓ Tiled Shower Bases
- ✓ Choice of tiles or timber look laminate flooring
- ✓ Driveway & Garage door remotes



Please Contact  
Alex Szechtman  
0402482884  
alexs@8homes.com.au

*We make it easy!*