

Price includes standard floorplan with S1 facade.



Furniture, feature lighting, landscaping, driveway, window furnishings, and porch decking not provided by Eight Homes.

FIRST HOME BUYERS PRICE \$664,390 ^

## FIXED PRICE HOUSE & LAND

**S TWO.1**

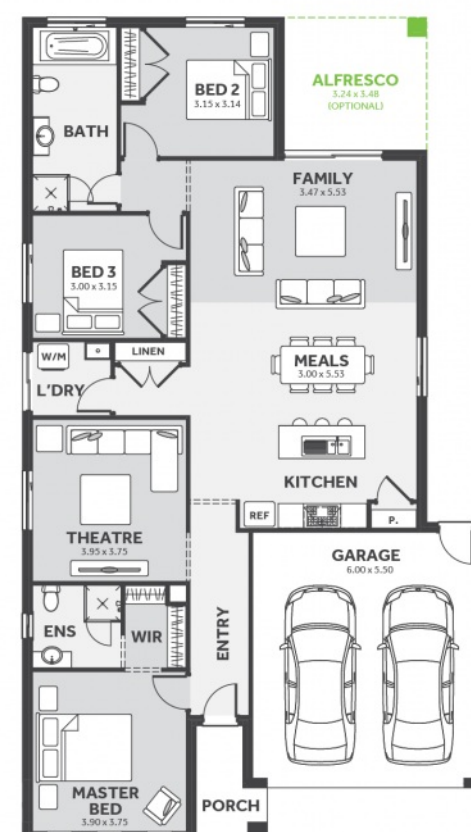
Lot 1035, Chiswell Avenue

LAND SIZE: 350.00m<sup>2</sup>



191.28m<sup>2</sup> | 20.59 sqs

- ✓ Council and Developer Requirements
- ✓ 25 Year Structural Guarantee
- ✓ \$888 Deposit
- ✓ Stone bench tops & overhead cupboards to the kitchen
- ✓ 900mm appliances & dishwasher to the kitchen
- ✓ Tiled Shower Bases
- ✓ Choice of tiles or timber look laminate flooring
- ✓ Driveway & Garage door remotes



Please Contact  
Paige McCarthy  
0404 209 118  
paigem@8homes.com.au

*We make it easy!*



