

Price includes standard floorplan with S1 facade.



Furniture, feature lighting, landscaping, driveway, window furnishings, and porch decking not provided by Eight Homes.

FIRST HOME BUYERS PRICE \$778,532 ^

FIXED PRICE HOUSE & LAND

S THREE

Lot 1236, NEOCLASSIQ STREET
LAND SIZE: 440.00m²

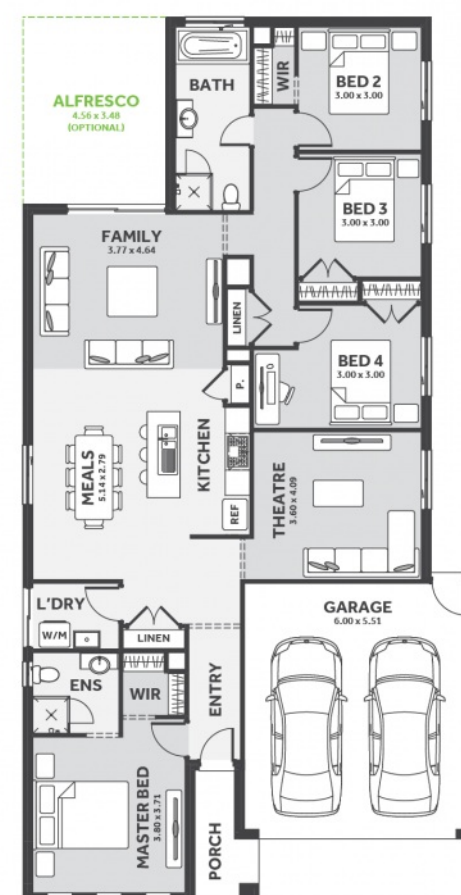


ATTWELL

4 2.0 2

215.99m² | 23.25 sqs

- ✓ Council and Developer Requirements
- ✓ 25 Year Structural Guarantee
- ✓ \$888 Deposit
- ✓ Stone bench tops & overhead cupboards to the kitchen
- ✓ 900mm appliances & dishwasher to the kitchen
- ✓ Tiled Shower Bases
- ✓ Choice of tiles or timber look laminate flooring
- ✓ Driveway & Garage door remotes
- ✓ Double glazed windows



Please Contact
Kathy Salva
0417 571 005
kathys@8homes.com.au

We make it easy!

