

Price includes standard floorplan with Q2 facade.



Artist impression. Furniture, landscaping, driveway, window furnishing and porch decking is not provided by Urbanedge Homes.

FIRST HOME BUYERS PRICE \$961,178 ^

FIXED PRICE HOUSE & LAND

Jumeirah 6-49

Lot 934, Isherwood Road
LAND SIZE: 448.00m²



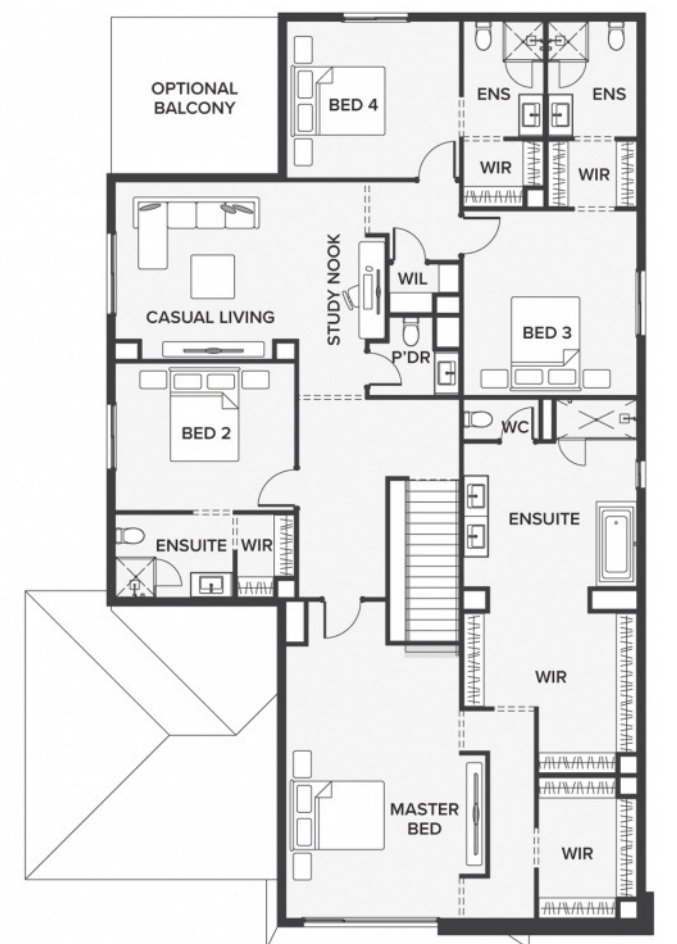
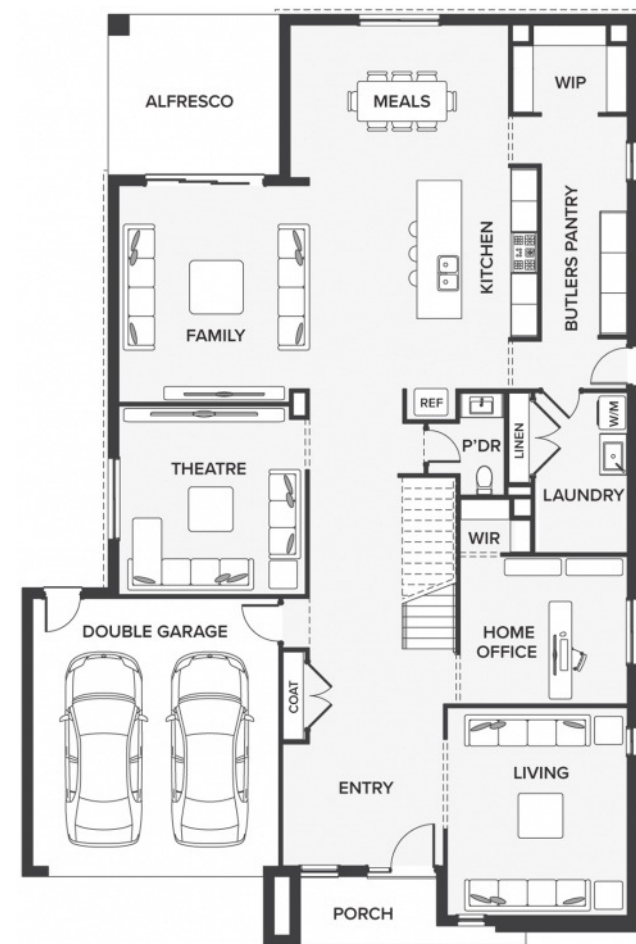
ATTWELL

4 4 2

459.94m² | 49.51 sqs

- ▲ Architecturally inspired fully rendered facade
- ▲ Brickwork or rendered foam above all ground floor windows and sliding doors
- ▲ Smeg Appliances to Kitchen
- ▲ Floor coverings throughout
- ▲ Silestone benchtops to Kitchen and Ensuite(s) Bathroom
- ▲ Base Cabinetry to Laundry
- ▲ and much more ...

edge
inclusions



Please Contact
Sujen Bhashkar
0412 357 732
sujenb@urbanedgehomes.com.au

LuxuryRedefined
urbanedgehomes.com.au