

Price includes standard floorplan with Q5 facade.



Artist impression. Furniture, landscaping, driveway, window furnishing and porch decking is not provided by Urbanedge Homes.

FIRST HOME BUYERS PRICE \$809,999 ^

## FIXED PRICE HOUSE & LAND

### Larne 4-40

Lot 550, Cushion Way  
LAND SIZE: 500.00m<sup>2</sup>

## MARIGOLD

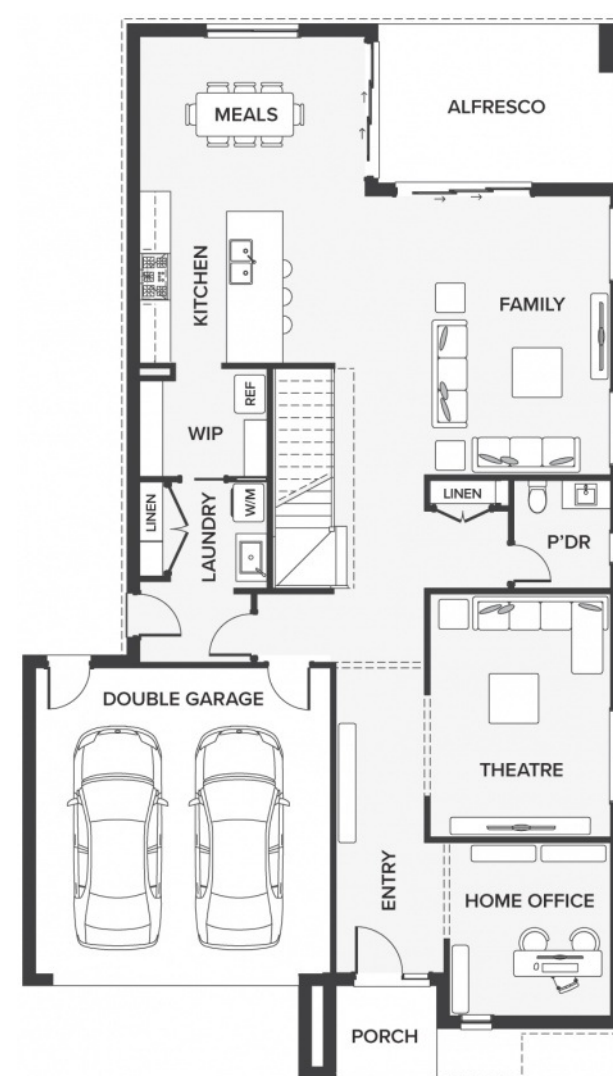
by Growland

4 2 2

369.18m<sup>2</sup> | 39.74 sqs

- ▲ Architecturally inspired fully rendered facade
- ▲ Brickwork or rendered foam above all ground floor windows and sliding doors
- ▲ Smeg Appliances to Kitchen
- ▲ Floor coverings throughout
- ▲ Silestone benchtops to Kitchen and Ensuite(s) Bathroom
- ▲ Base Cabinetry to Laundry
- ▲ and much more ...

edge  
inclusions



Please Contact  
Luke Jarosz  
0416 039 657  
lukej@urbanedgebg.com.au

Luxury Redefined  
urbanedgehomes.com.au