

Price includes standard floorplan with S1 facade.



Furniture, feature lighting, landscaping, driveway, window furnishings, and porch decking not provided by Eight Homes.

FIRST HOME BUYERS PRICE \$658,295 ^

FIXED PRICE HOUSE & LAND

S FOUR.1

Lot 2307, Firmona Street

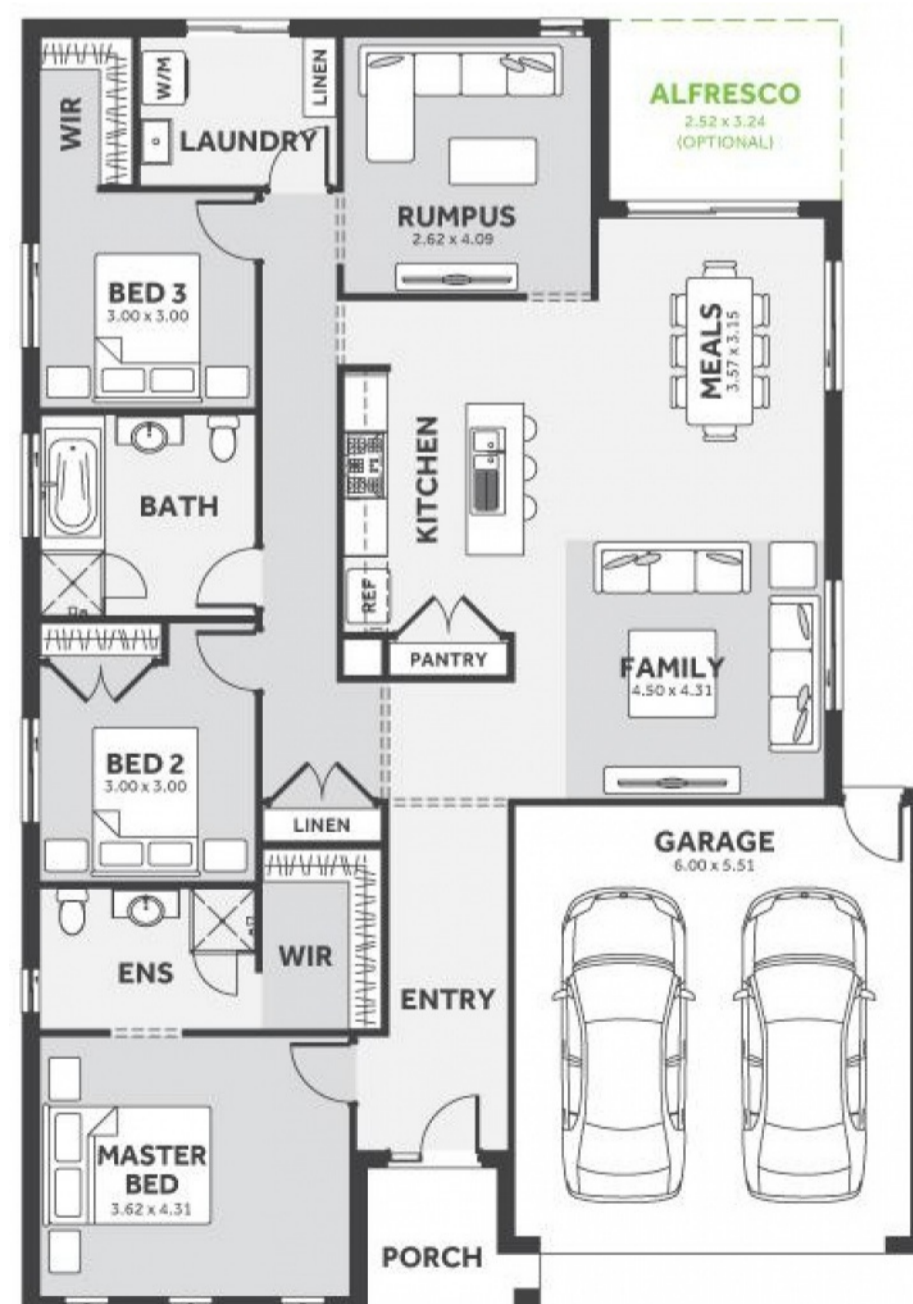
LAND SIZE: 350.00m²

RIVERDALE VILLAGE +

3 2.0 2

200.94m² | 21.63 sqs

- ✓ Council and Developer Requirements
- ✓ 25 Year Structural Guarantee
- ✓ \$888 Deposit
- ✓ Stone bench tops & overhead cupboards to the kitchen
- ✓ 900mm appliances & dishwasher to the kitchen
- ✓ Tiled Shower Bases
- ✓ Choice of tiles or timber look laminate flooring
- ✓ Driveway & Garage door remotes



Please Contact

Eva Abenir

0433 574 468

Evaa@8homes.com.au

We make it easy!