

Price includes standard floorplan with S1 facade.



Furniture, feature lighting, landscaping, driveway, window furnishings, and porch decking not provided by Eight Homes.

**FIRST HOME BUYERS PRICE \$650,392 ^**

**FIXED PRICE  
HOUSE & LAND**

**ZUI2-24**

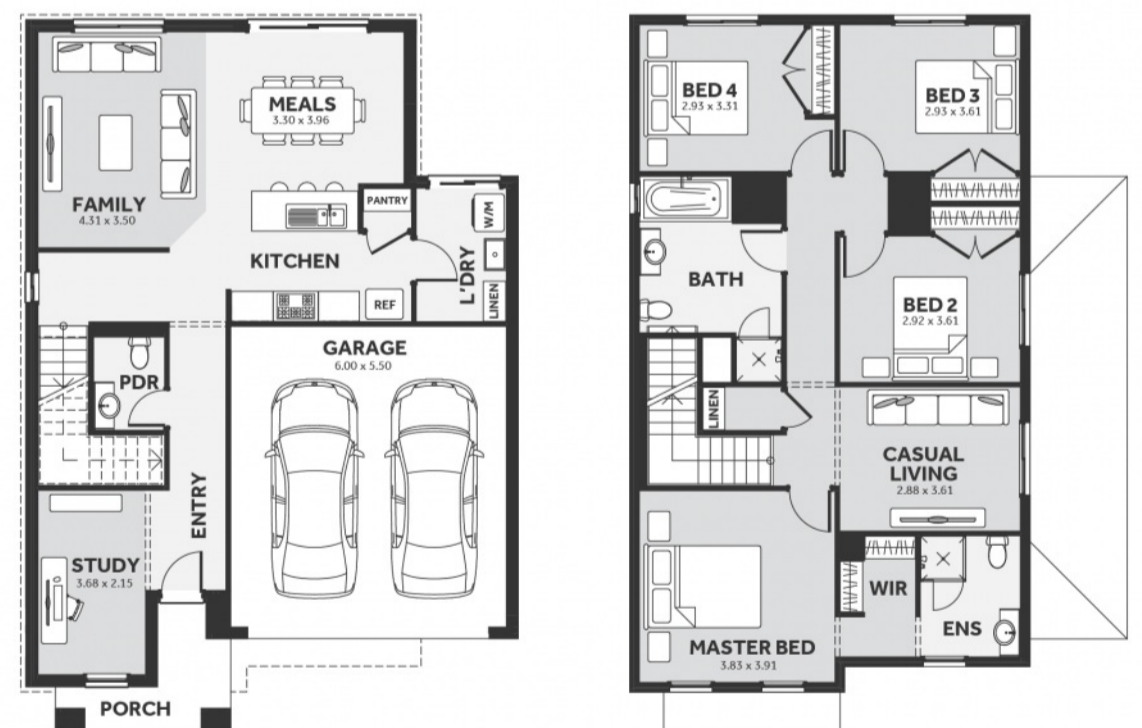
Lot 1830, Gelantipy Drive  
LAND SIZE: 263.00m<sup>2</sup>



4 2.5 2

**228.16m<sup>2</sup> | 24.56 sqs**

- ✓ Council and Developer Requirements
- ✓ 25 Year Structural Guarantee
- ✓ \$888 Deposit
- ✓ Stone bench tops & overhead cupboards to the kitchen
- ✓ 900mm appliances & dishwasher to the kitchen
- ✓ Tiled Shower Bases
- ✓ Choice of tiles or timber look laminate flooring
- ✓ Driveway & Garage door remotes



Please Contact  
Kimberley McIntyre  
0468 305 237  
kimberleym@8homes.com.au

*We make it easy!*

