

Price includes standard floorplan with S1 facade.



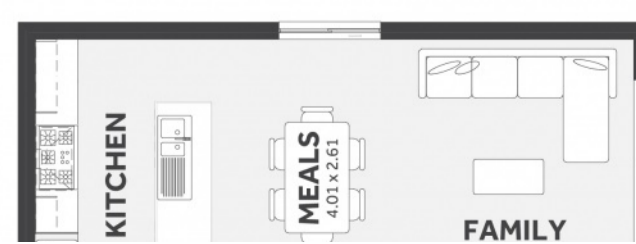
*Excludes driveway, window furnishings and porch decking not provided by Eight Homes.

FIRST HOME BUYERS PRICE \$537,471

**FIXED PRICE
HOUSE & LAND**

Senji 6-16

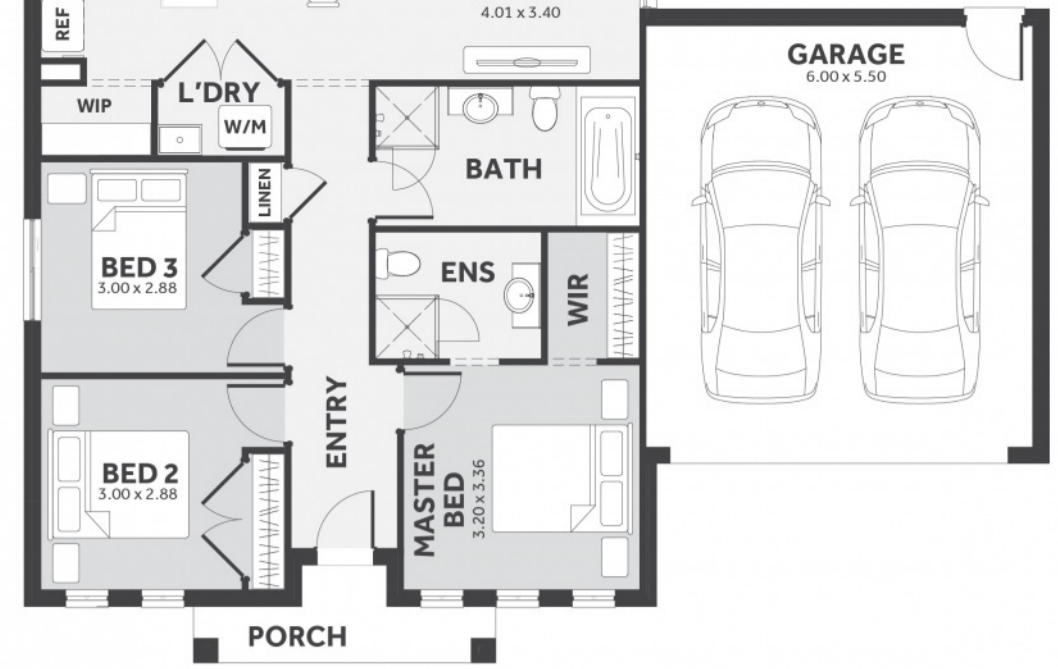
Lot 549, Riverwood Drive Junction Village
LAND SIZE: 251.00m²



3 2.0 2

145.38m² | 15.65 sqs

- ✓ Council and Developer Requirements
- ✓ 12 Month Price Freeze
- ✓ 25 Year Structural Guarantee
- ✓ \$888 Deposit
- ✓ Efficient and Simple
- ✓ Stone bench tops & 900mm appliances to Kitchen
- ✓ Stylish 8mm timber look laminate flooring
- ✓ Driveway



Please Contact
Kartini Reyes
0402 768 447
kartinir@8homes.com.au

We make it easy!

*Price is based on the standard floorplan and facade. Eight Homes reserves the right to change prices/promotions without notification. Subject to developer's design review panel final approval. Package price is based on builder's preferred siting. Images are for illustrative purposes and are to be used as a guide only. Eight Homes does not provide furniture, décor, landscaping & decking. Please refer to house & land inclusions and house specific working drawings for all details. ^Available to first home buyers eligible for the state government First Home Owners Grant. For details visit www.sro.vic.gov.au. Mahercorp Pty Ltd. DBU 1994