

Price includes standard floorplan with S1 facade.



Furniture, feature lighting, landscaping, driveway, window furnishings, and porch decking not provided by Eight Homes.

FIRST HOME BUYERS PRICE \$733,826 ^

FIXED PRICE HOUSE & LAND

S FIVE.1

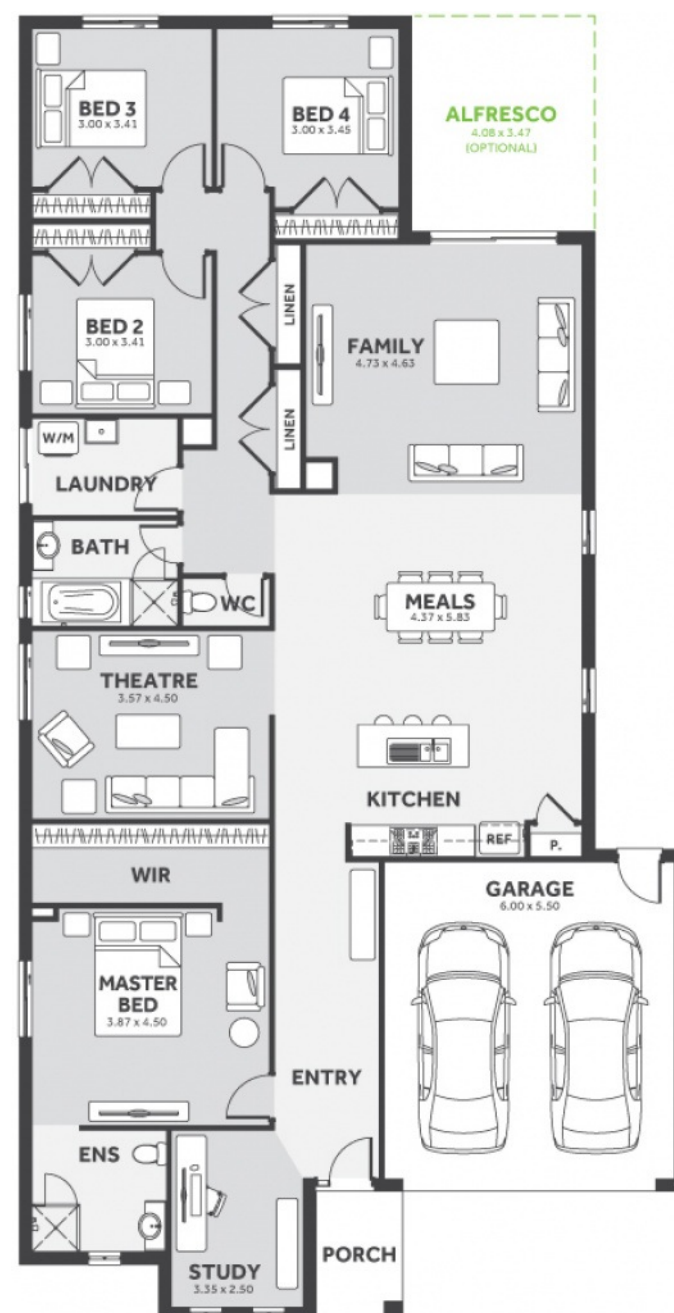
Lot 2329, Gravemere

LAND SIZE: 536.00m²



254.63m² | 27.41 sqs

- ✓ Council and Developer Requirements
- ✓ 25 Year Structural Guarantee
- ✓ \$888 Deposit
- ✓ Stone bench tops & overhead cupboards to the kitchen
- ✓ 900mm appliances & dishwasher to the kitchen
- ✓ Tiled Shower Bases
- ✓ Choice of tiles or timber look laminate flooring
- ✓ Driveway & Garage door remotes



Please Contact
Alex Szechtman
0402482884
alexs@8homes.com.au

We make it easy!