

Price includes standard floorplan with S1 facade.



Furniture, feature lighting, landscaping, driveway, window furnishings, and porch decking not provided by Eight Homes.

FIRST HOME BUYERS PRICE \$768,830 ^

**FIXED PRICE
HOUSE & LAND**

S FOUR

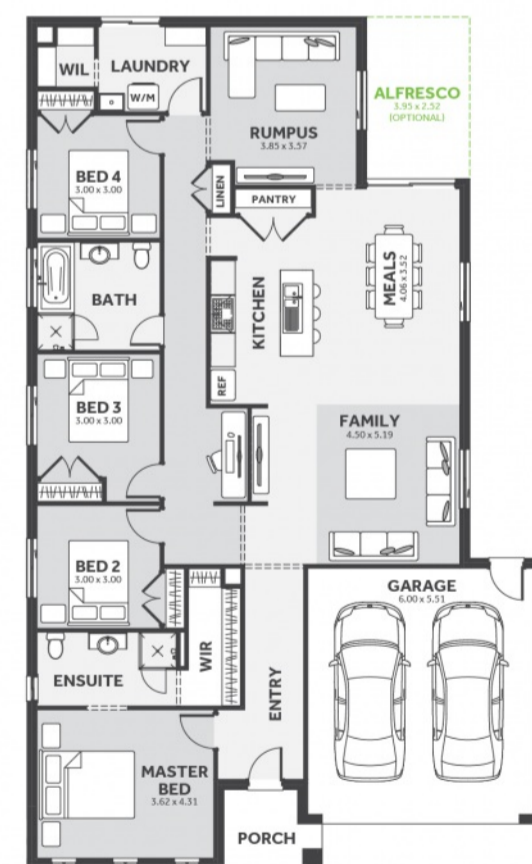
Lot 1530, GOLDRIDGE DRIVE
LAND SIZE: 392.00m²

RATHDOWNE
WOLLERT

4 2.0 2

221.65m² | 23.86 sqs

- ✓ Council and Developer Requirements
- ✓ 25 Year Structural Guarantee
- ✓ \$888 Deposit
- ✓ Stone bench tops & overhead cupboards to the kitchen
- ✓ 900mm appliances & dishwasher to the kitchen
- ✓ Tiled Shower Bases
- ✓ Choice of tiles or timber look laminate flooring
- ✓ Driveway & Garage door remotes
- ✓ Double glazed windows



Please Contact
Eva Abenir
0433 574 468
Evaa@8homes.com.au

We make it easy!

