

Price includes standard floorplan with S1 facade.



Furniture, feature lighting, landscaping, driveway, window furnishings, and porch decking not provided by Eight Homes.

FIRST HOME BUYERS PRICE \$699,181 ^

## FIXED PRICE HOUSE & LAND

### S ONE.2

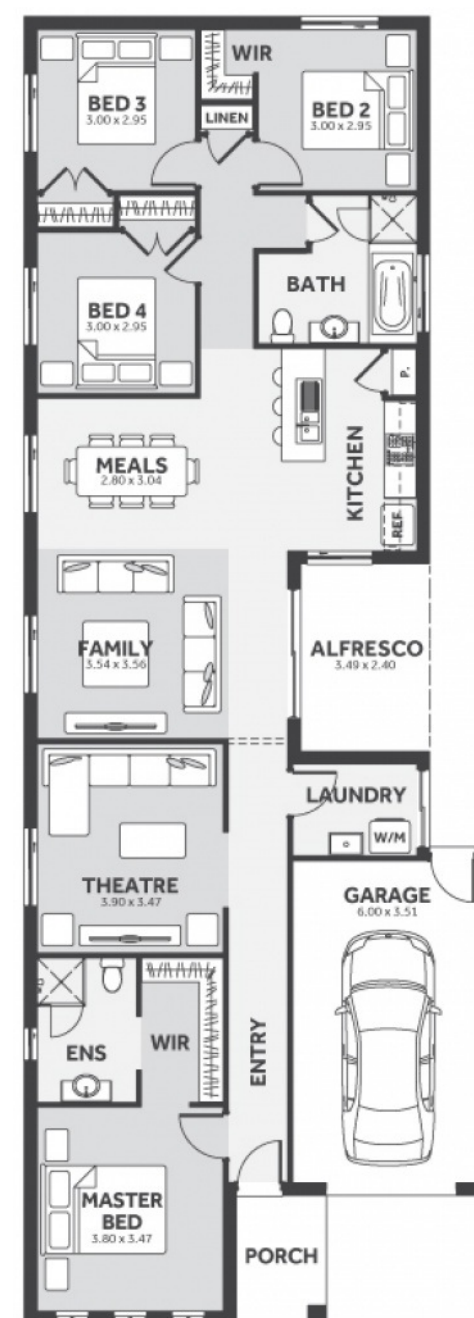
Lot 3320, Oasis Drive Mount Duneed  
LAND SIZE: 336.00m<sup>2</sup>

ARMSTRONG  
MT DUNEED

4 2.0 1

186.91m<sup>2</sup> | 20.12 sqs

- ✓ Council and Developer Requirements
- ✓ 25 Year Structural Guarantee
- ✓ \$888 Deposit
- ✓ Stone bench tops & overhead cupboards to the kitchen
- ✓ 900mm appliances & dishwasher to the kitchen
- ✓ Tiled Shower Bases
- ✓ Choice of tiles or timber look laminate flooring
- ✓ Driveway & Garage door remotes
- ✓ Double glazed windows



Please Contact  
Diana Krstevska  
0412 362 617  
dianak@8homes.com.au

*We make it easy!*