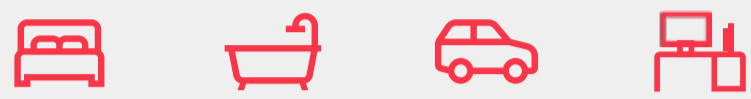


# Jumeirah 5-51

**51.45** m+  
lot width

width **15 m+** | depth **30 m+**



**4**      **4**      **2**      **3.60 x 3.47**

**Exterior Width:**                      **13120 mm**

**Exterior Length:**                    **22530 mm**

## Dimensions

Living	422.90 m <sup>2</sup>	45.52 sqs
Garage	37.20 m <sup>2</sup>	4.00 sqs
Portch	3.82 m <sup>2</sup>	0.54 sqs
Alfresco	12.90 m <sup>2</sup>	1.39 sqs
Balcony	0.00 m <sup>2</sup>	0.00 sqs
Optional Alfresco	0.00 m <sup>2</sup>	0.00 sqs

**Total 477.97m<sup>2</sup> | 51.45 sqs**

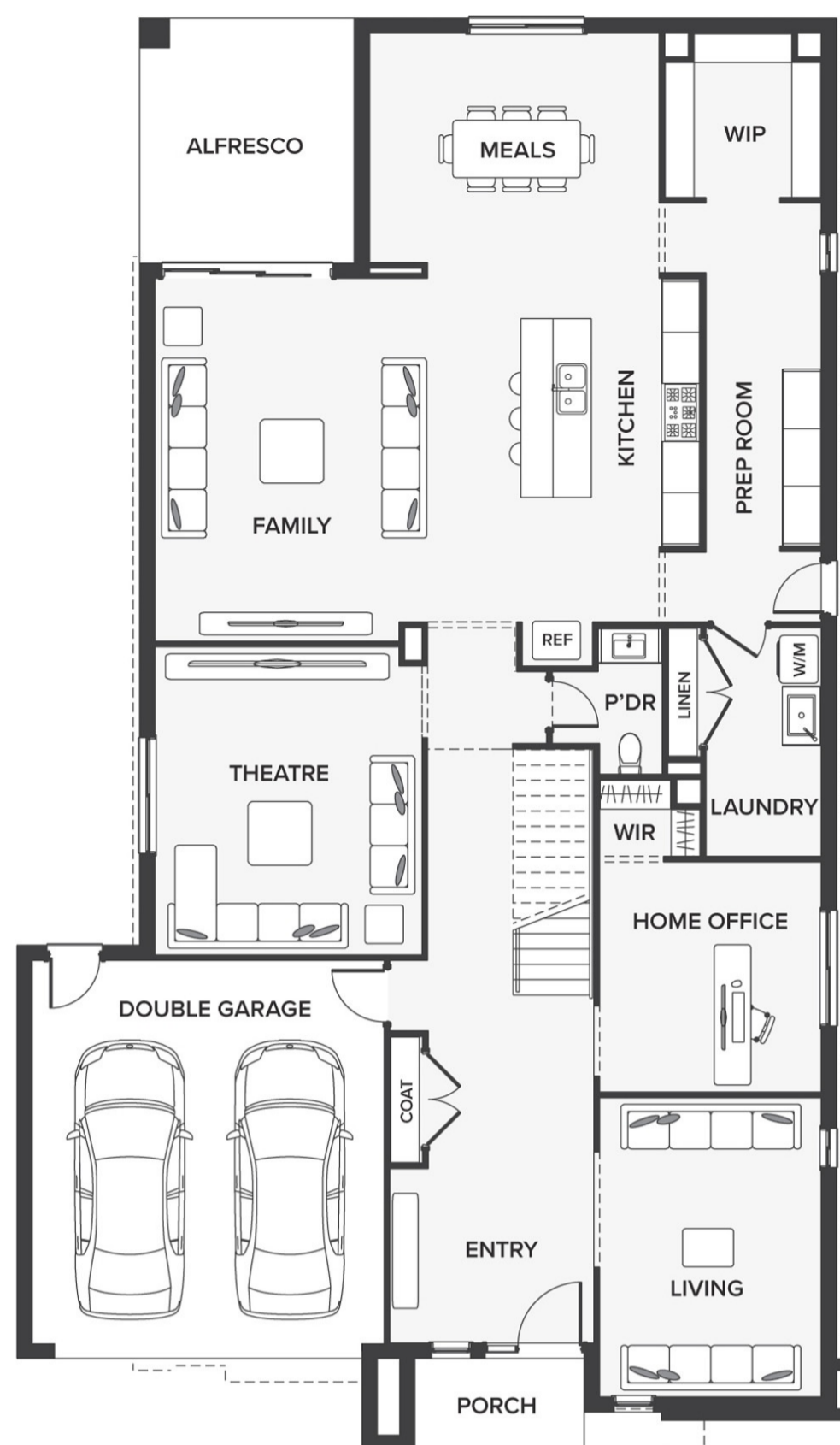
Floorplan images and measurements are to be used as a guide only. Please refer to specific working drawings for details.

For more information please visit:

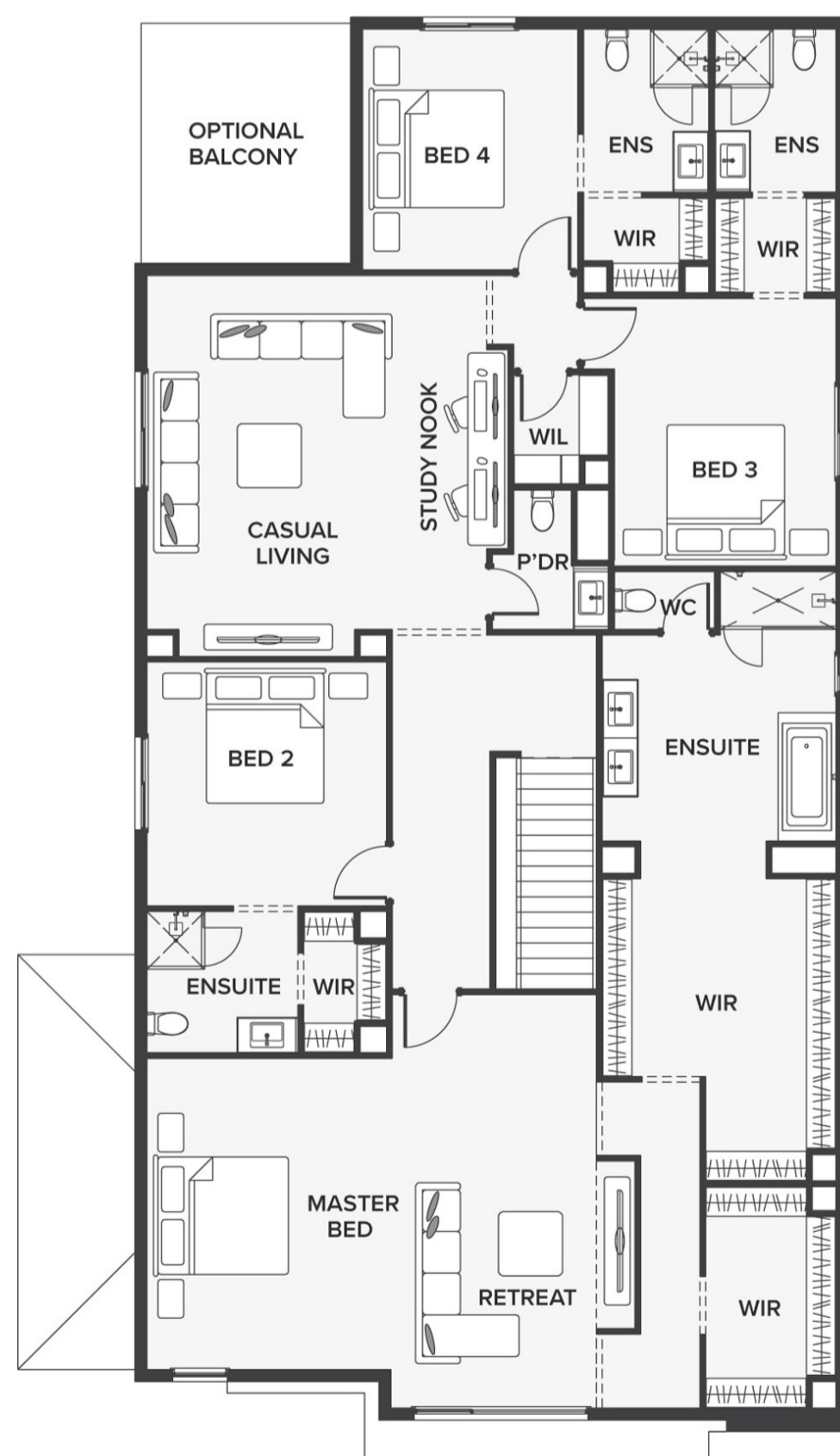
[www.houseandlandworld.com](http://www.houseandlandworld.com)

or call:

**1300 HL WORLD**



Ground Floor



First Floor