

Price includes standard floorplan with S1 facade.



Furniture, feature lighting, landscaping, driveway, window furnishings, and porch decking not provided by Eight Homes.

**FIRST HOME BUYERS PRICE \$779,888 ^**

**FIXED PRICE  
HOUSE & LAND**

**S FIVE.2**

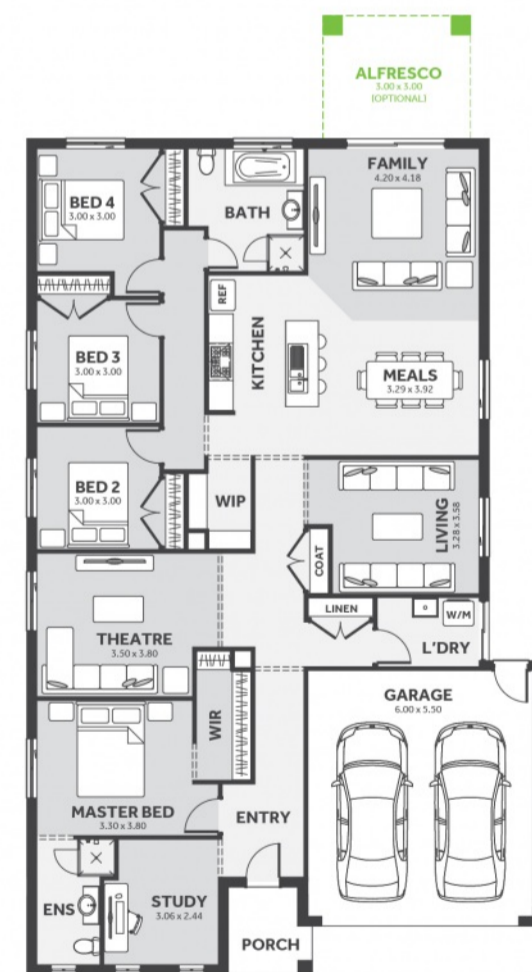
Lot 1530, GOLDRIDGE DRIVE  
LAND SIZE: 392.00m<sup>2</sup>

**RATHDOWNE  
WOLLERT**



**234.29m<sup>2</sup> | 25.22 sqs**

- ✓ Council and Developer Requirements
- ✓ 25 Year Structural Guarantee
- ✓ \$888 Deposit
- ✓ Stone bench tops & overhead cupboards to the kitchen
- ✓ 900mm appliances & dishwasher to the kitchen
- ✓ Tiled Shower Bases
- ✓ Choice of tiles or timber look laminate flooring
- ✓ Driveway & Garage door remotes
- ✓ Double glazed windows



Please Contact  
Eva Abenir  
0433 574 468  
Evaa@8homes.com.au

*We make it easy!*

\*Price is based on the standard floorplan and facade. Eight Homes reserves the right to change prices/promotions without notification. Subject to developer's design review panel final approval. Package price is based on builder's preferred siting. Images are for illustrative purposes and are to be used as a guide only. Eight Homes does not provide furniture, décor, landscaping & decking. Please refer to house & land inclusions and house specific working drawings for all details. ^Available to first home buyers eligible for the state government First Home Owners Grant. For details visit [www.sro.vic.gov.au](http://www.sro.vic.gov.au). Mahercorp Pty Ltd. DBU 1994



