

Price includes standard floorplan with S1 facade.



Furniture, feature lighting, landscaping, driveway, window furnishings, and porch decking not provided by Eight Homes.

FIRST HOME BUYERS PRICE \$560,534 ^

FIXED PRICE HOUSE & LAND

Senji 4-14

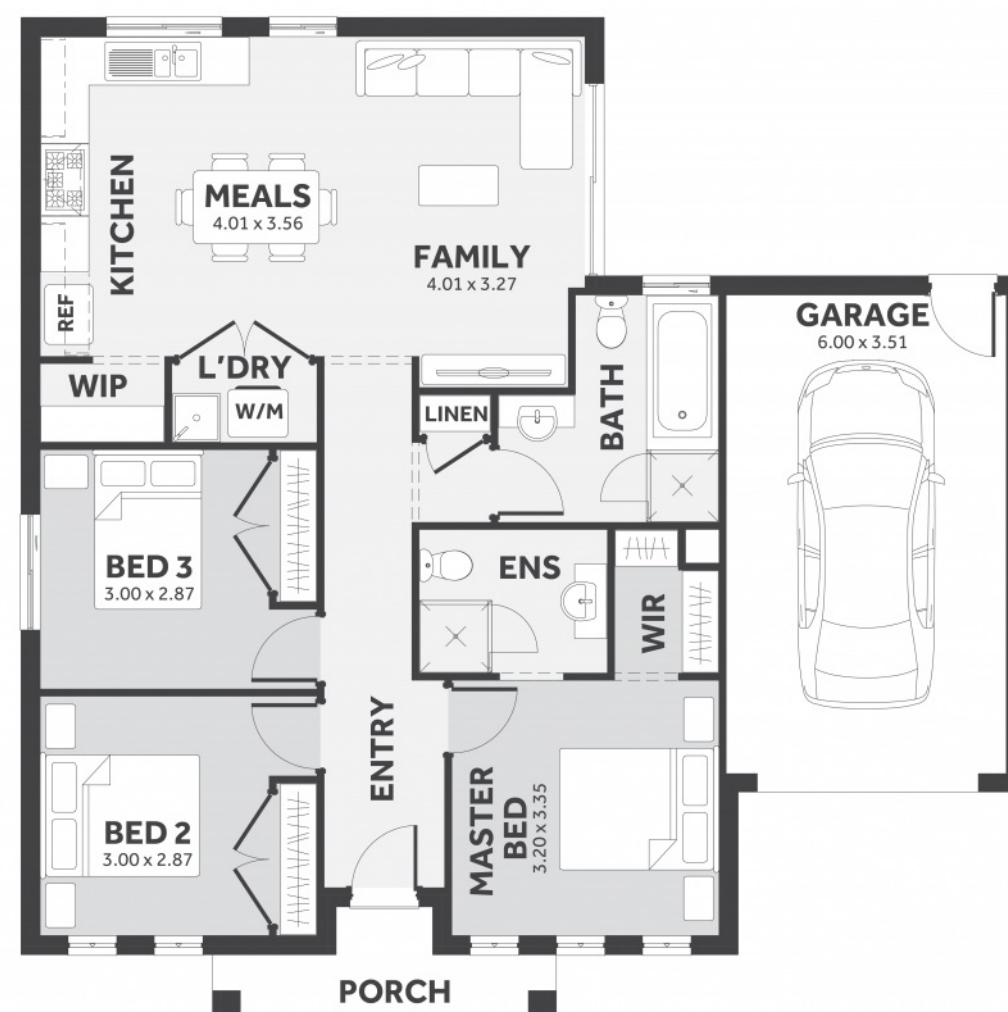
Lot 2415, Avenator Circuit

LAND SIZE: 252.00m²



127.83m² | 13.76 sqs

- ✓ Council and Developer Requirements
- ✓ 25 Year Structural Guarantee
- ✓ \$888 Deposit
- ✓ Stone bench tops & overhead cupboards to the kitchen
- ✓ 900mm appliances & dishwasher to the kitchen
- ✓ Tiled Shower Bases
- ✓ Choice of tiles or timber look laminate flooring
- ✓ Driveway & Garage door remotes
- ✓ Double glazed windows



Please Contact

Tania Shaw

0430 927 258

tania.shaw@8homes.com.au

We make it easy!

