

Price includes standard floorplan with STANDARD-RYLAN-21 facade.



Artist impression. Furniture, landscaping, driveway, window furnishing and porch decking is not provided by Urbanedge Homes.

FIRST HOME BUYERS PRICE \$783,252 ^

FIXED PRICE HOUSE & LAND

Rylan 1-24 (4 Bedroom)

Lot 320, Prudence Parade
LAND SIZE: 263.00m²

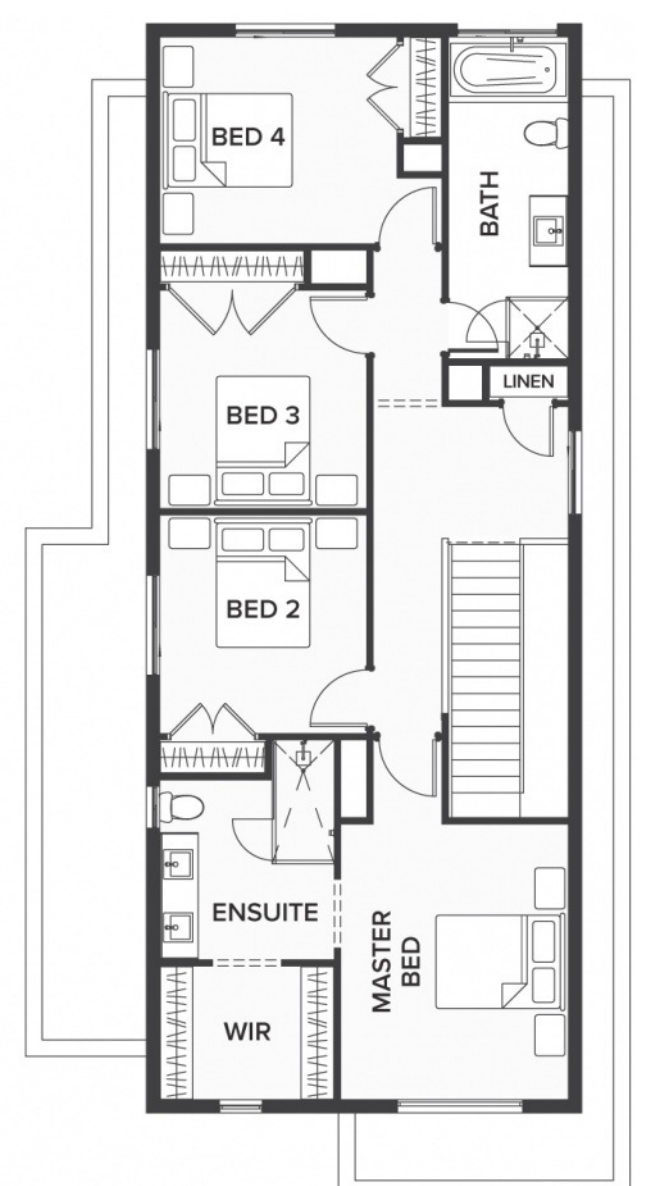
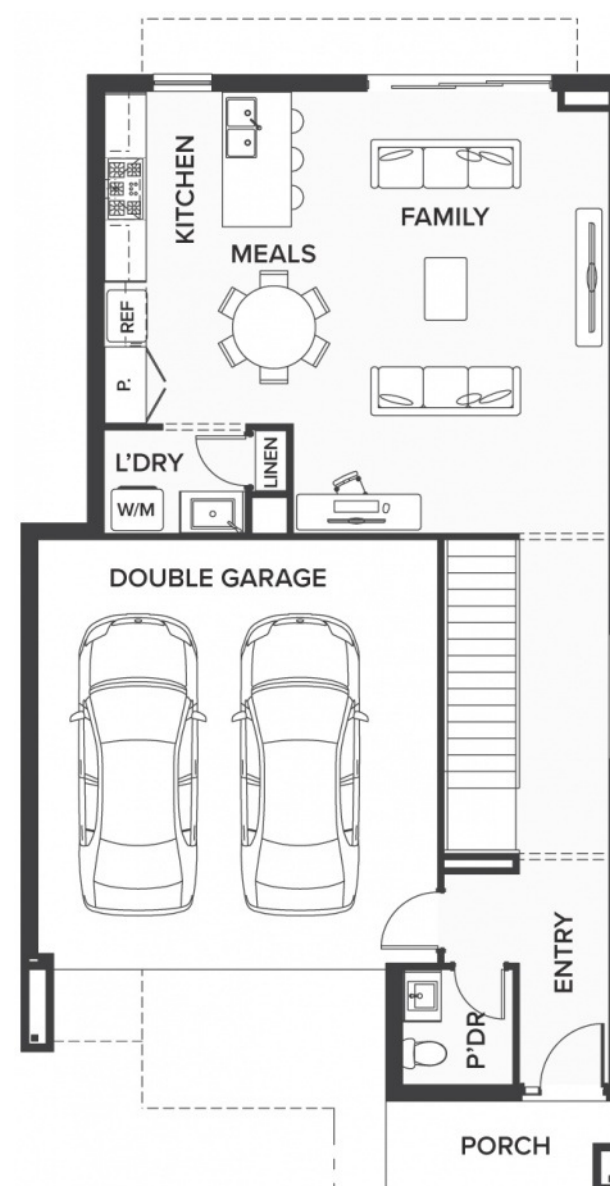
BOARDWALK

4 2 2

218.4m² | 23.51 sqs

- ▲ Architecturally inspired fully rendered facade
- ▲ Brickwork or rendered foam above all ground floor windows and sliding doors
- ▲ Smeg Appliances to Kitchen
- ▲ Floor coverings throughout
- ▲ Silestone benchtops to Kitchen and Ensuite(s) Bathroom
- ▲ Base Cabinetry to Laundry
- ▲ and much more ...

edge
inclusions



Please Contact
Kevin Chen
kevinc@urbanedgehomes.com.au

LuxuryRedefined
urbanedgehomes.com.au