

Price includes standard floorplan with STANDARD 12.5-16M BUILD OVER. JPEG facade.



Artist impression. Furniture, landscaping, driveway, window furnishing and porch decking is not provided by Urbanedge Homes.

FIRST HOME BUYERS PRICE \$957,720 ^

FIXED PRICE HOUSE & LAND

Jumeirah 4-47

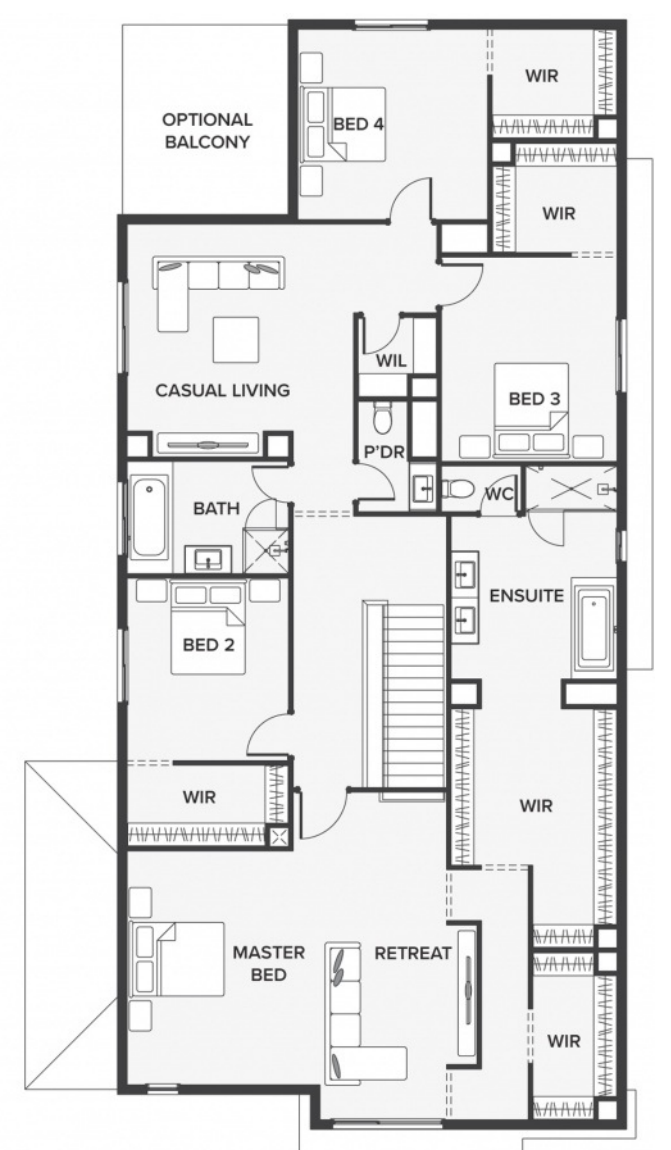
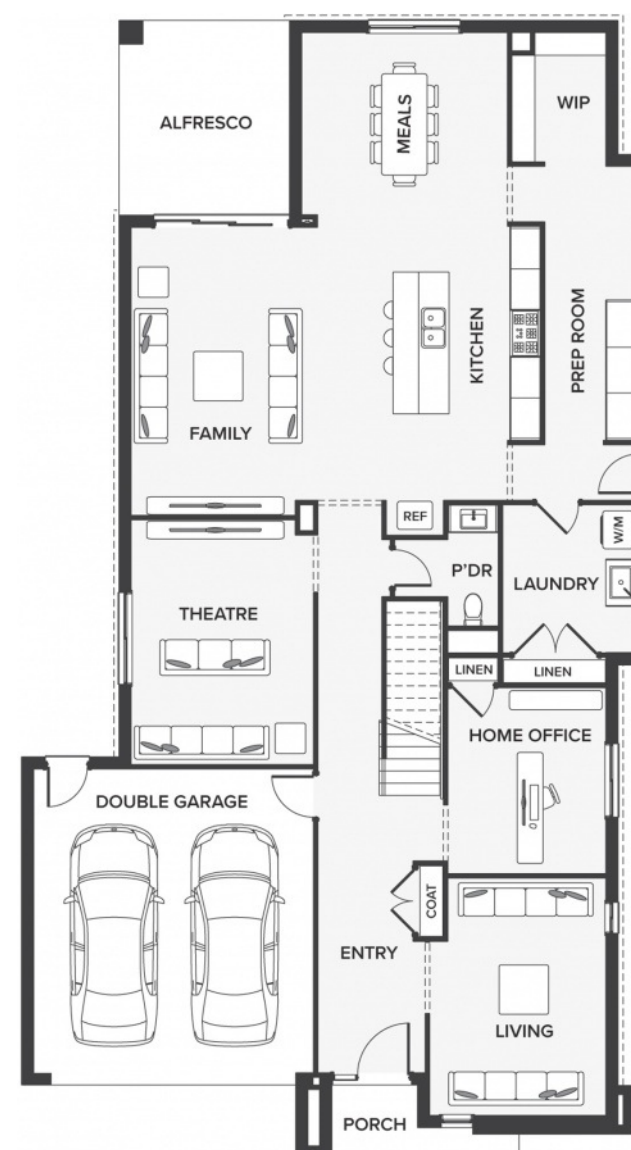
Lot 1230, Gasgoyne Avenue
LAND SIZE: 453.00m²



436.72m² | 47.01 sqs

- ▲ Architecturally inspired fully rendered facade
- ▲ Brickwork or rendered foam above all ground floor windows and sliding doors
- ▲ Smeg Appliances to Kitchen
- ▲ Floor coverings throughout
- ▲ Silestone benchtops to Kitchen and Ensuite(s) Bathroom
- ▲ Base Cabinetry to Laundry
- ▲ and much more ...

edge
inclusions



Please Contact
Mark Berrell
0422 546 201
markb@urbanedgehomes.com.au

Luxury Redefined
urbanedgehomes.com.au