

# MODE4-31

**31.01** m+  
lot width

width **14 m+** | depth **21 m+**



**Exterior Width:** 11890 mm

**Exterior Length:** 15910 mm

## Dimensions

Living	226.09 m <sup>2</sup>	24.34 sqs
Garage	37.12 m <sup>2</sup>	4.00 sqs
Portch	6.14 m <sup>2</sup>	0.66 sqs
Alfresco	17.86 m <sup>2</sup>	1.92 sqs
Balcony	0.00 m <sup>2</sup>	0.00 sqs
Optional Alfresco	0.00 m <sup>2</sup>	0.00 sqs

**Total 288.08m<sup>2</sup> | 31.01 sqs**

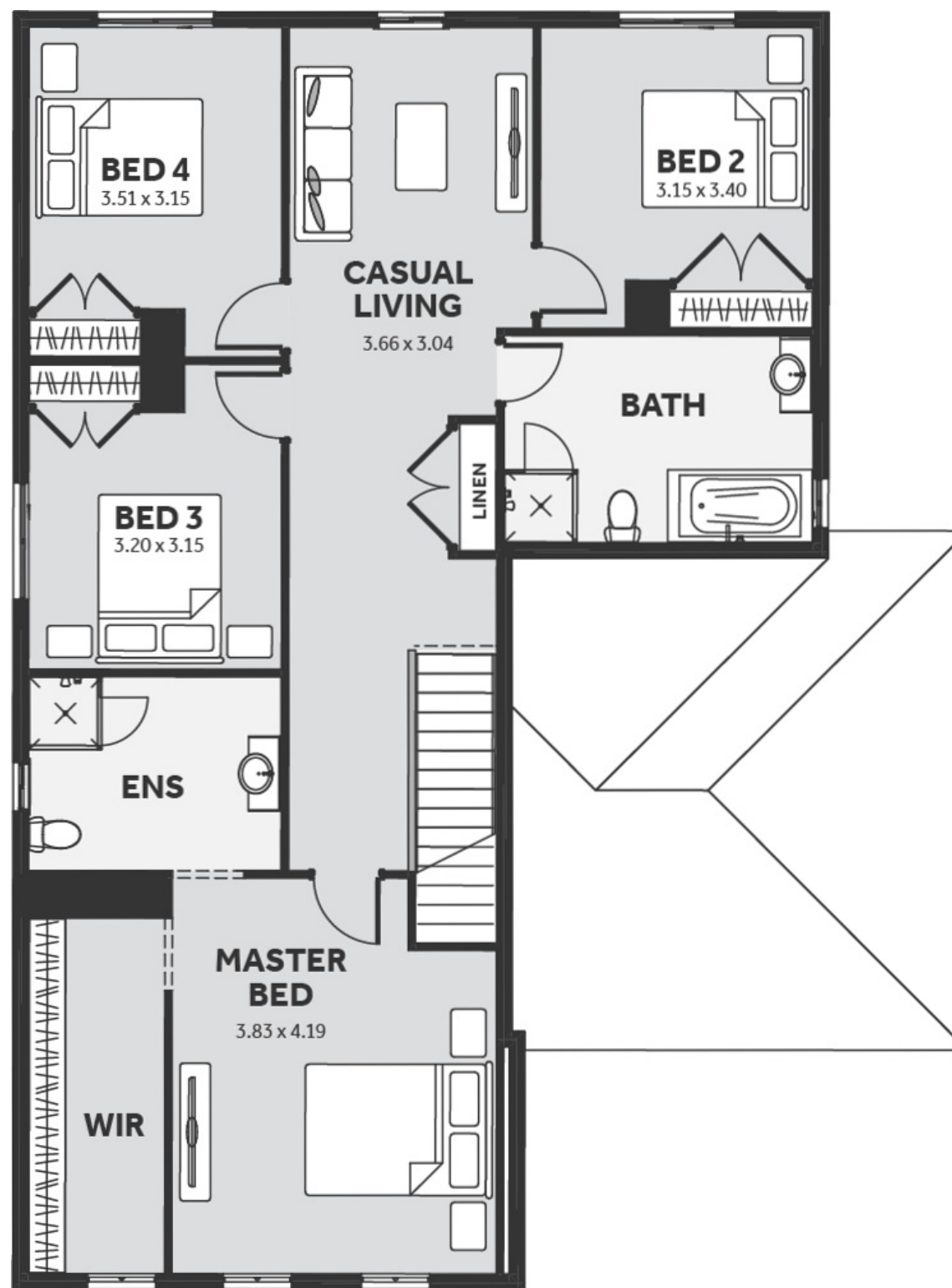
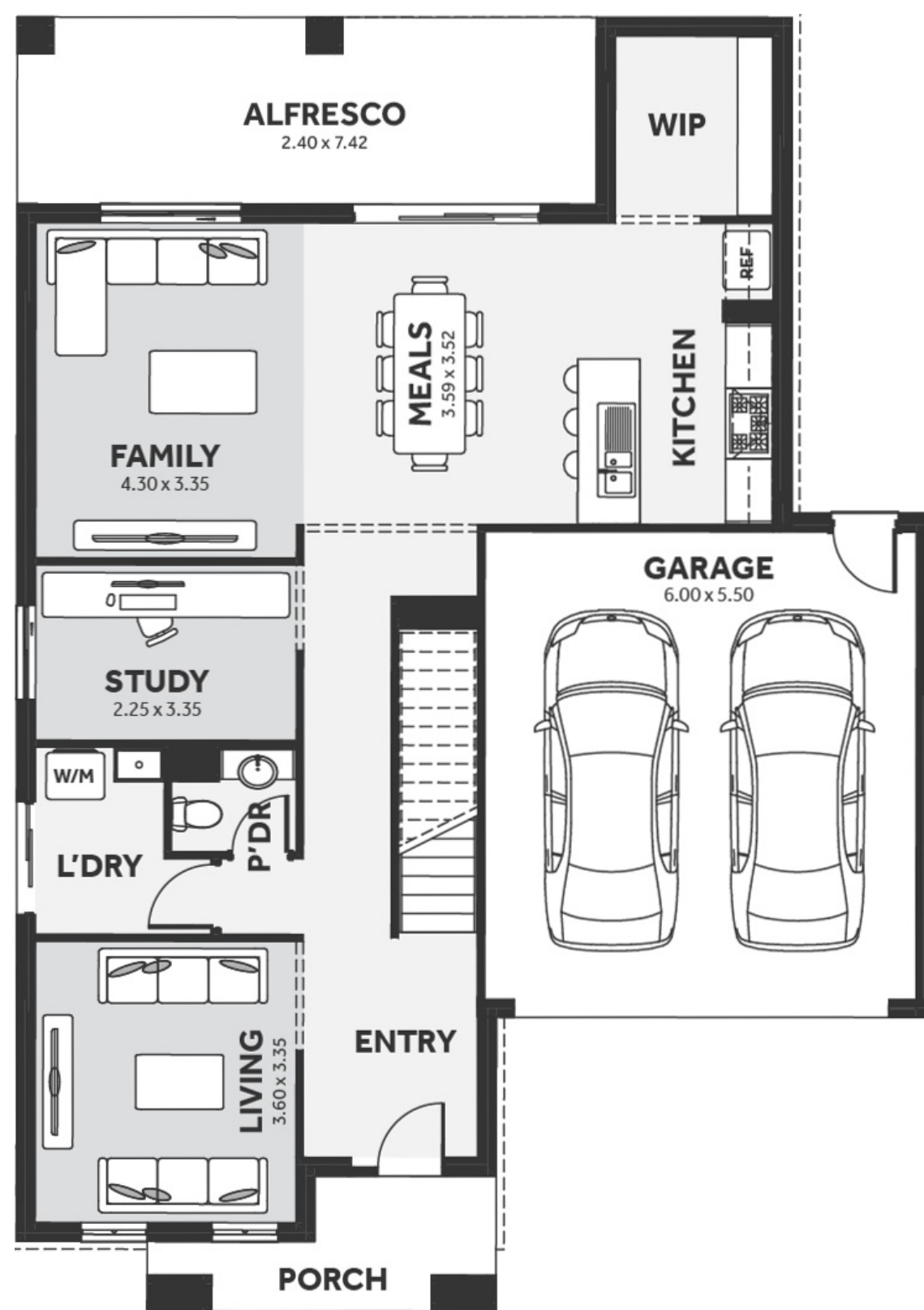
Floorplan images and measurements are to be used as a guide only. Please refer to specific working drawings for details.

For more information please visit:

[www.houseandlandworld.com](http://www.houseandlandworld.com)

or call:

**1300 HL WORLD**



**HOUSE &  
LAND** WORLD

**eight**  
HOMES