

Price includes standard floorplan with Q11-BUILD OVER facade.



Artist impression. Furniture, landscaping, driveway, window furnishing and porch decking is not provided by Urbanedge Homes.

FIRST HOME BUYERS PRICE \$972,338 ^

## FIXED PRICE HOUSE & LAND

## Jumeirah 5-51

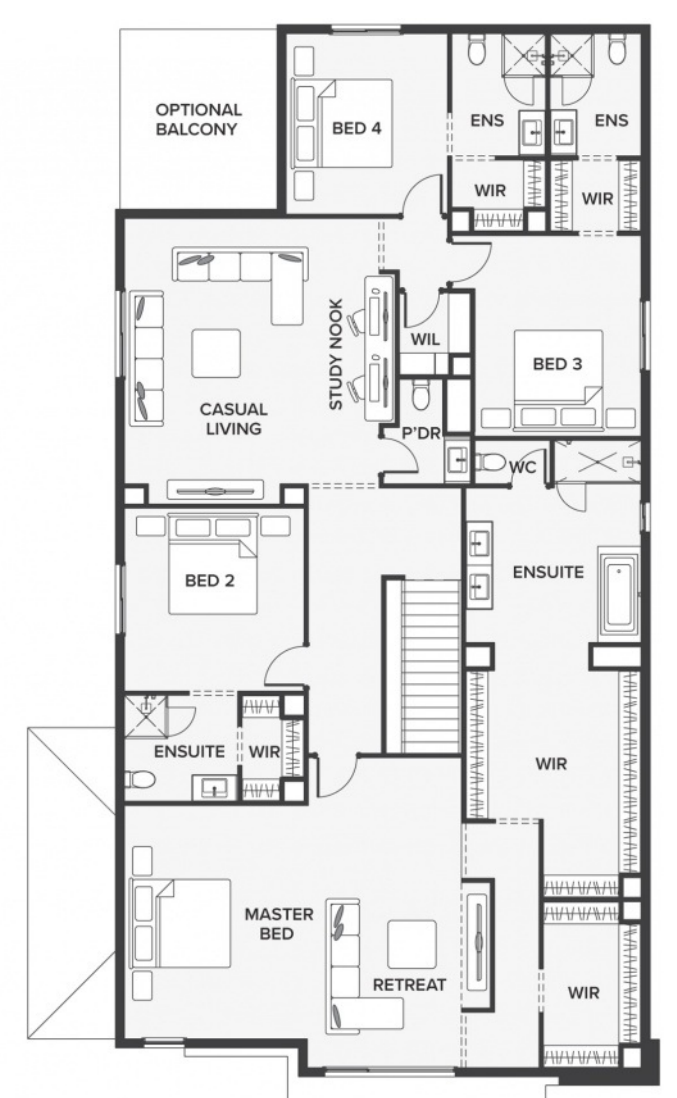
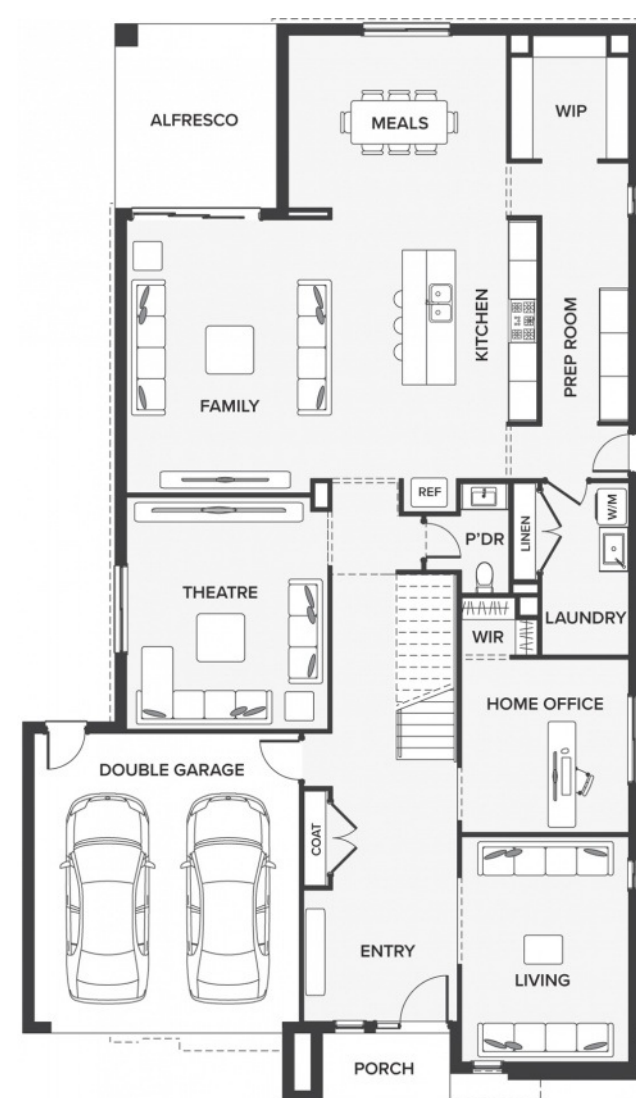
Lot 4254, Castlecrag Way  
LAND SIZE: 561.00m<sup>2</sup>



477.97m<sup>2</sup> | 51.45 sqs

- ▲ Architecturally inspired fully rendered facade
- ▲ Brickwork or rendered foam above all ground floor windows and sliding doors
- ▲ Smeg Appliances to Kitchen
- ▲ Floor coverings throughout
- ▲ Silestone benchtops to Kitchen and Ensuite(s) Bathroom
- ▲ Base Cabinetry to Laundry
- ▲ and much more ...

edge  
inclusions



Please Contact  
Sujen Bhashkar  
0412 357 732  
sujenb@urbanedgehomes.com.au

Luxury Redefined  
urbanedgehomes.com.au