

Price includes standard floorplan with STANDARD-BUILD OVER STRUCTURE WITH UPGRADE MATERIALS facade.



Artist impression. Furniture, landscaping, driveway, window furnishing and porch decking is not provided by Urbanedge Homes.

FIRST HOME BUYERS PRICE \$832,103 ^

## FIXED PRICE HOUSE & LAND

## Jardene 2-31

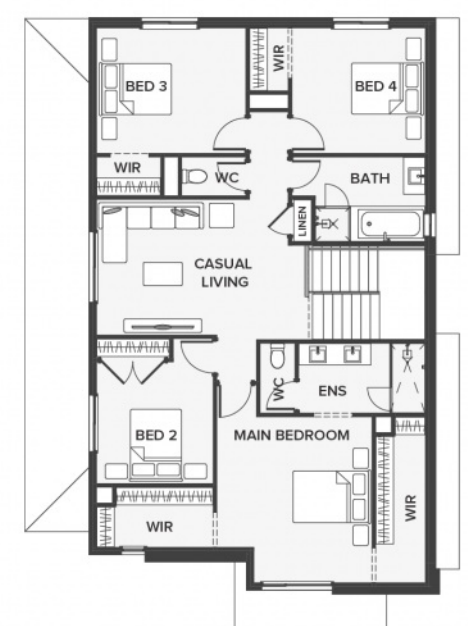
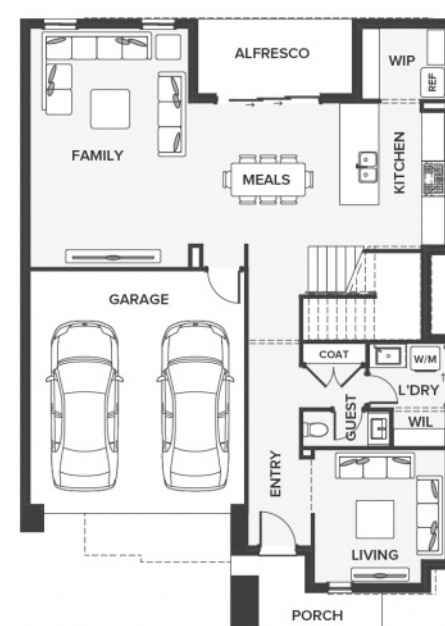
Lot 2126, CABO CIRCUIT  
LAND SIZE: 350.00m<sup>2</sup>



283.25m<sup>2</sup> | 30.49 sqs

- ▲ Architecturally inspired fully rendered facade
- ▲ Brickwork or rendered foam above all ground floor windows and sliding doors
- ▲ Smeg Appliances to Kitchen
- ▲ Floor coverings throughout
- ▲ Silestone benchtops to Kitchen and Ensuite(s) Bathroom
- ▲ Base Cabinetry to Laundry
- ▲ and much more ...

edge  
inclusions



Please Contact  
Kevin Chen  
kevinc@urbanedgehomes.com.au

Luxury Redefined  
urbanedgehomes.com.au