

Price includes standard floorplan with Q9-BUILD OVER facade.

Artist impression. Furniture, landscaping, driveway, window furnishing and porch decking is not provided by Urbanedge Homes.

FIRST HOME BUYERS PRICE \$1,013,718 ^

## FIXED PRICE HOUSE & LAND

## Jumeirah 4-47

Lot 1018, Hampi Drive  
LAND SIZE: 448.00m<sup>2</sup>

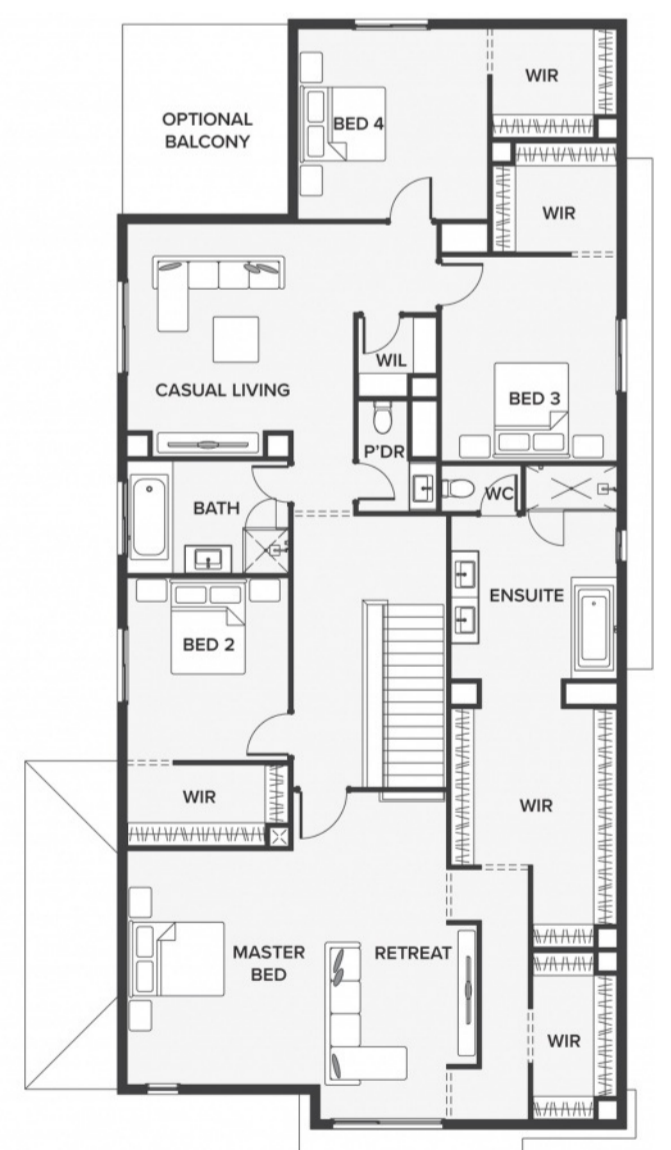
# MONUMENT

4 2 2

436.72m<sup>2</sup> | 47.01 sqs

- ▲ Architecturally inspired fully rendered facade
- ▲ Brickwork or rendered foam above all ground floor windows and sliding doors
- ▲ Smeg Appliances to Kitchen
- ▲ Floor coverings throughout
- ▲ Silestone benchtops to Kitchen and Ensuite(s) Bathroom
- ▲ Base Cabinetry to Laundry
- ▲ and much more ...

edge  
inclusions



Please Contact  
Sujen Bhashkar  
0412 357 732  
sujenb@urbanedgehomes.com.au

Luxury Redefined  
urbanedgehomes.com.au