

Price includes standard floorplan with S1 facade.



FIRST HOME BUYERS PRICE \$913,898 ^

## FIXED PRICE HOUSE & LAND

**d FIVE.1**

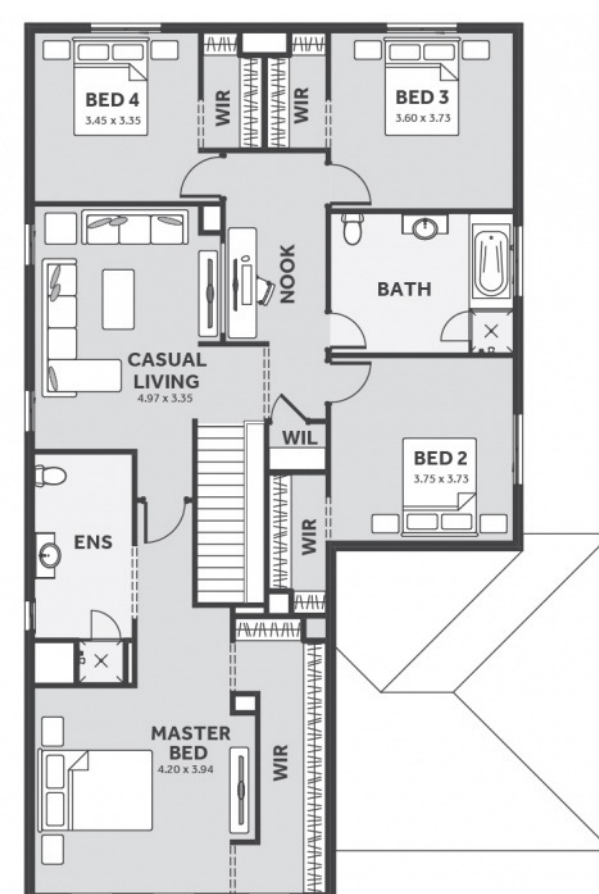
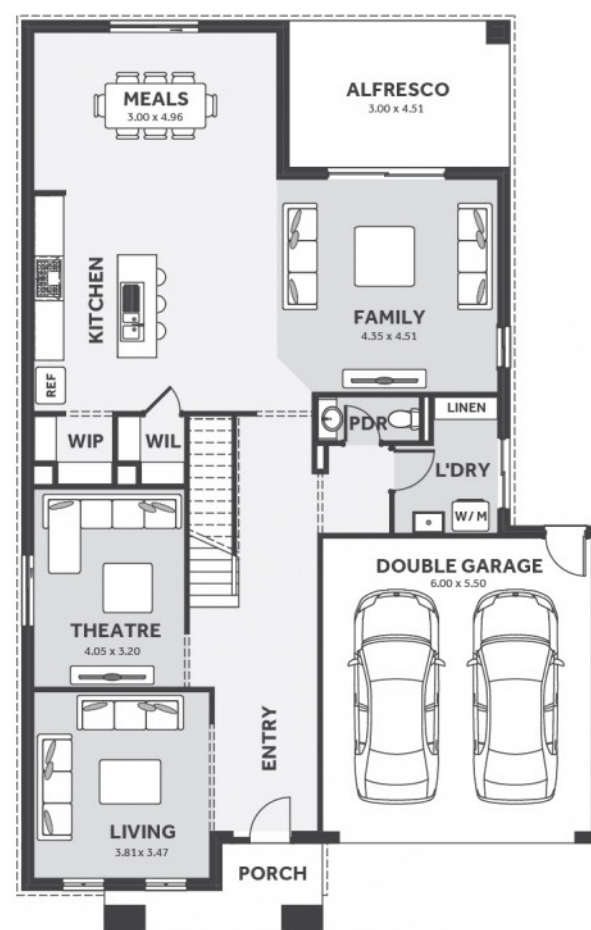
Lot 1530, GOLDRIDGE DRIVE  
LAND SIZE: 392.00m<sup>2</sup>

RATHDOWNE  
WOLLERT

5 3.5 2

344.1m<sup>2</sup> | 37.04 sqs

- ✓ Council and Developer Requirements
- ✓ 25 Year Structural Guarantee
- ✓ \$888 Deposit
- ✓ Stone bench tops & overhead cupboards to the kitchen
- ✓ 900mm appliances & dishwasher to the kitchen
- ✓ Tiled Shower Bases
- ✓ Choice of tiles or timber look laminate flooring
- ✓ Driveway & Garage door remotes
- ✓ Double glazed windows



Please Contact  
Eva Abenir  
0433 574 468  
Evaa@8homes.com.au

*We make it easy!*